



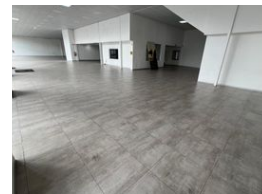
Ethan Willett
0844752021
ethan.w@newpointproperty.co.za

Contact Head Office

010 0354431

Office 40A
Eden Meadows Complex
1 Van Riebeeck Avenue
Greenstone
1609

1,201m² Showroom To Let in Kensington B



R120,000 pm

Gross Monthly Rental R120,000 Excl. VAT
Monthly Rates R1 Excl. VAT

Monthly Levy R1 Excl. VAT

40 0

Premium Showroom/Dealership with High Visibility in Kensington B

Position your business for success with this 1,201m² freestanding showroom or dealership on a 4,063m² stand along Bram Fischer Drive, Randburg. Boasting prime exposure, excellent signage opportunities, and two gated entrances, the property ensures smooth traffic flow and convenience, with ample covered parking for customers and staff.

Inside, you'll find a spacious showroom floor, five private offices, kitchenettes, male and female restrooms, and a dedicated wash bay with drainage. Perfect for a dealership or high-traffic business, this turnkey property is available immediately at R120,000/

Features

Zoning Retail

Interior

Floor Loading Cap. 2 Tn/m²
Power 3 Phase Yes
Power Amps 60

Exterior

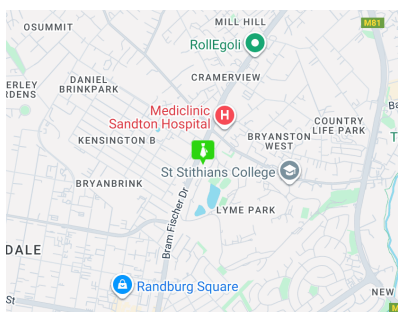
Covered Parking Bays 40

Sizes

Floor Size 1,201m²

Extras

24 Hour Access 24 Hour Response



<https://www.newpointproperty.co.za>