



Tyrone Varga
Principal Property
Practitioner
Registered with PPRA
(FFC 114 321 7)
072 869 3246

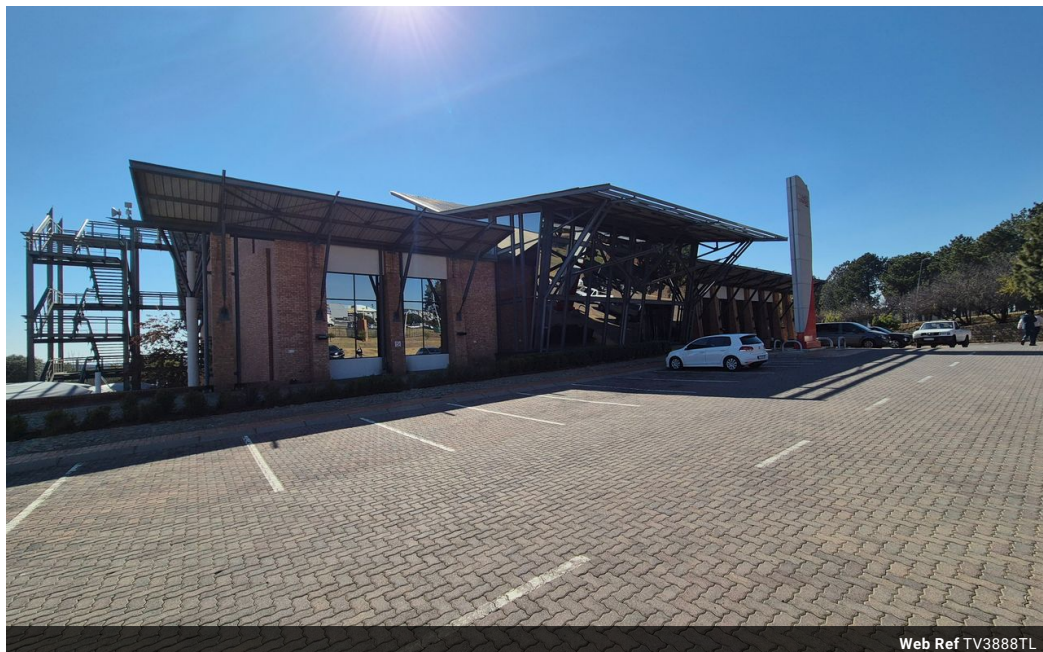
tyrone@newpointproperty.co.za

Contact Head Office

010 0354431

Office 40A
Eden Meadows Complex
1 Van Riebeeck Avenue
Greenstone
1609

3,888m² Showroom To Let in Longmeadow



Web Ref TV3888TL



R544,320 pm

Gross Monthly Rental R544,320 Excl. VAT

158 42

Freestanding showroom on a large stand To Rent or For Sale on a main road in Longmeadow/Greenstone

A premium 3,888m² A-grade showrrom facility is available to let in the sought-after Greenstone/Longmeadow node. Situated on an expansive 21,210m² stand, the property boasts a modern, architecturally designed building that makes a strong corporate statement. Features include a versatile mezzanine level, expansive open-plan areas, and a large balcony perfect for staff functions or events. The premises are supported by full backup power and water systems, with 300 amps of 3-phase electricity, ensuring seamless operations.

Fully air-conditioned throughout, the building also includes a sleek, modern kitchen for added convenience. With 200 parking bays available—comprising 85 shaded, 73 basement, and 42 open bays—ample parking is provided for staff and clients alike. This

Features

Zoning Retail

Interior

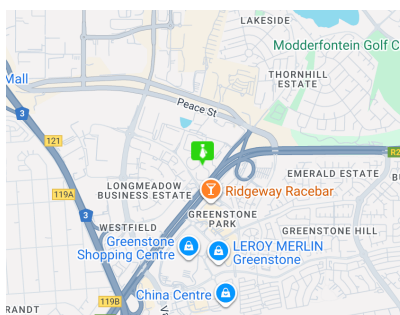
Air Conditioning	Yes
Power 3 Phase	Yes
Power Amps	300

Exterior

Security	Yes
Covered Parking Bays	85
Basement Parkings	73
Open Parking Bays	42

Sizes

Floor Size	3,888m ²
Land Size	21,210m ²



<https://www.newpointproperty.co.za>