



Mitchell Pereira
Candidate Property
Practitioner
Registered with PPRA
(FFC 118 481 0)
0812348999

mitchell@newpointproperty.co.za

Contact Head Office

010 0354431

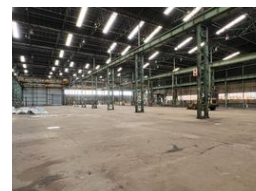
Office 40A
Eden Meadows Complex
1 Van Riebeeck Avenue
Greenstone
1609

37,374m² Factory To Let in Duncanville

NEW



Web Ref MPTL37374DUN



R1,420,212 pm

Gross Monthly Rental R1,420,212 Excl. VAT
Monthly Rates R1 Excl. VAT

Monthly Levy R1 Excl. VAT

150 0

37 734m² factory to let on 128 000m² stand !

This massive property has so much on offer! with 37 734m² under roof there is more than ample space for your business requirements.

The property is seated on a giant stand measuring 128 000m² with a 700m boundary line, the property is also split into multiple buildings across the site. At the first entrance gate you have a 9 996m² facility with 11,6m to the eaves, lots of natural light, huge available yard area, multiple roller shutter doors and a large power supply, not to mention a number of cranes. this facility has its own office block, bathrooms and staff change rooms.

at the last gate you have the balance of the factory space, which is made up of approx 3 separate factory areas, workshops and

Features

Zoning Industrial

Interior

Power 3 Phase Yes

Exterior

Security Yes
Covered Parking Bays 150

Sizes

Floor Size 37,374m²
Land Size 130,000m²



<https://www.newpointproperty.co.za>