



Miguel Naidoo
0745822026
miguel@newpointproperty.co.za

Contact Head Office

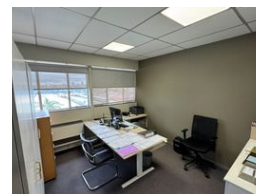
010 0354431

Office 40A
Eden Meadows Complex
1 Van Riebeeck Avenue
Greenstone
1609

512m² Warehouse To Let in Wynberg



Web Ref CL14001



R26,441 pm

Gross Monthly Rental R26,441 Excl. VAT
Monthly Rates R1 Excl. VAT

Monthly Levy R1 Excl. VAT

2 3

Secure Your Ideal 512m² Industrial Warehouse in Wynberg, Sandton — Prime Location & Flexible Leasing

Explore this 512m² industrial warehouse unit in Wynberg, Sandton — a well-established industrial hub known for excellent connectivity, security, and versatile spaces. Featuring open-plan layouts, dedicated parking, and essential amenities such as kitchen facilities, this unit supports a range of business operations. Enhanced security with 24-hour surveillance and controlled access ensures a safe working environment. Its strategic location near major transport routes offers easy access and high visibility, ideal for efficient logistics and business growth.

Navigating the leasing process is straightforward with expert guidance—thorough market research, careful site inspections, and professional advice ensure you find a space tailored to your needs. From negotiating rental terms to reviewing lease agreements,

Features

Zoning Industrial

Interior

Floor Loading Cap. 1 Tn/m²
Air Conditioning Yes

Exterior

Security Yes
Covered Parking Bays 2
Open Parking Bays 3

Sizes

Floor Size 512m²
Land Size 10,000m²
Building Height 10m

