



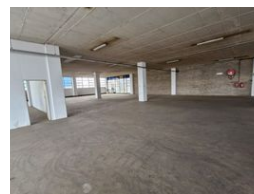
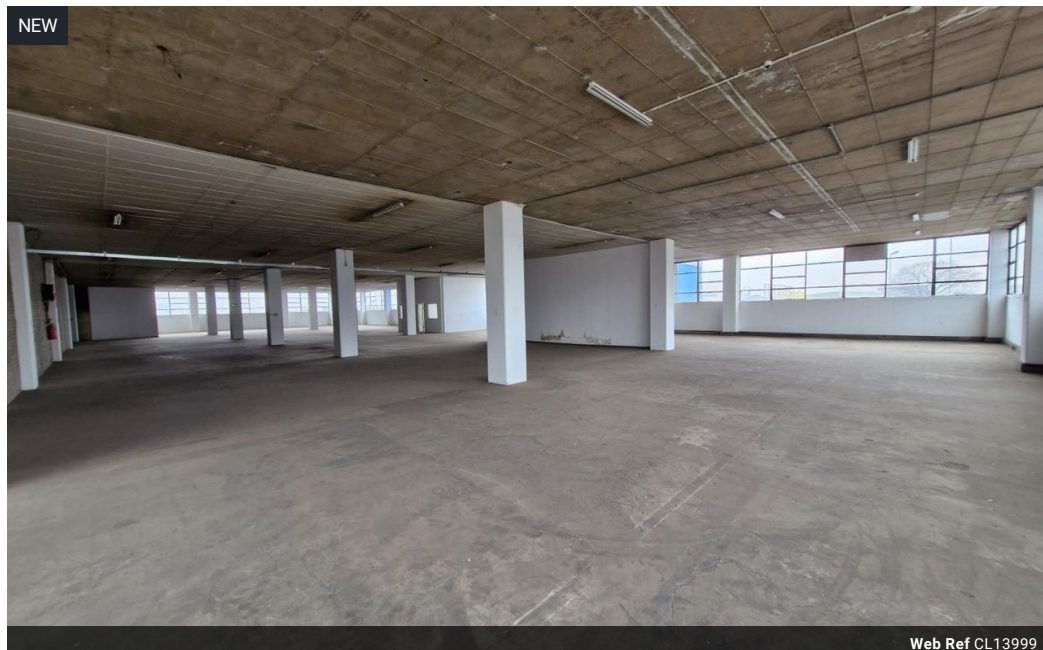
Miguel Naidoo  
0745822026  
miguel@newpointproperty.co.za

Contact Head Office

010 0354431

Office 40A  
Eden Meadows Complex  
1 Van Riebeeck Avenue  
Greenstone  
1609

1,260m<sup>2</sup> Warehouse To Let in Wynberg



R56,700 pm

Gross Monthly Rental R56,700 Excl. VAT

0 0

## Versatile 1,260m<sup>2</sup> Warehouse with Rooftop Parking in Wynberg, Sandton

Unlock your business's full potential with this strategically located 1,260m<sup>2</sup> warehouse in Wynberg, Sandton's vibrant industrial hub. Perfect for light manufacturing, storage, or distribution, the space includes two offices, two bathrooms, and additional storage areas, with flexibility to expand the office component to suit your needs. A unique rooftop parking area offers secure and convenient access for both staff and visitors.

Designed for efficiency, the warehouse features a large roller shutter door for easy loading and offloading, plenty of natural light to create a bright working environment, and reliable three-phase power to support a variety of operations. Positioned close to major transport routes, this property combines space, accessibility, and infrastructure to help your business grow. Contact us today to

## Features

**Zoning** Industrial

### Interior

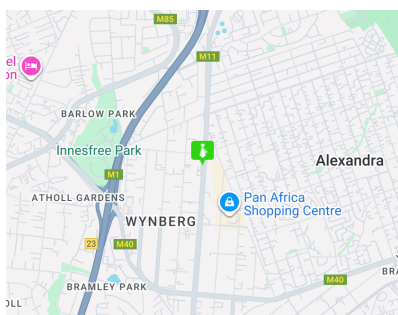
Floor Loading Cap.	10 Tn/m <sup>2</sup>
Power 3 Phase	Yes
Power Amps	150

### Exterior

Security	Yes
----------	-----

### Sizes

Floor Size	1,260m <sup>2</sup>
Land Size	5,000m <sup>2</sup>
Building Height	5m



<https://www.newpointproperty.co.za>