



Miguel Naidoo  
0745822026  
miguel@newpointproperty.co.za

Contact Head Office

010 0354431

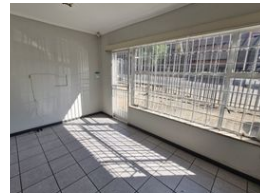
Office 40A  
Eden Meadows Complex  
1 Van Riebeeck Avenue  
Greenstone  
1609

400m<sup>2</sup> Warehouse To Let in Wynberg

NEW



Web Ref CL13970



R40,000 pm

Gross Monthly Rental R40,000 Excl. VAT  
Monthly Rates R1 Excl. VAT

Monthly Levy R1 Excl. VAT

0 5

## Prime Warehouse Space To Let in Wynberg, Sandton – Ideal for Logistics or Light Manufacturing

Unlock the perfect space for your business with this well-maintained warehouse in Wynberg, Sandton. The unit offers a large open-plan layout, high ceilings for racking, and great natural light. It's ideal for warehousing, light manufacturing, or logistics operations. A large roller shutter door makes loading easy, and three-phase power ensures reliable performance for various industrial needs.

The warehouse is located in a secure industrial area with 24-hour access control and excellent access to the M1 highway and major transport routes. This central, functional space places your business in one of Johannesburg's top industrial locations.

## Features

**Zoning** Industrial

### Interior

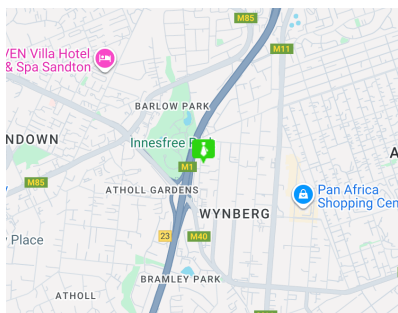
Floor Loading Cap. 10 Tn/m<sup>2</sup>  
Air Conditioning Yes  
Power Amps 100

### Exterior

Open Parking Bays 5

### Sizes

Floor Size 400m<sup>2</sup>  
Land Size 3,000m<sup>2</sup>  
Building Height 5m



<https://www.newpointproperty.co.za>