



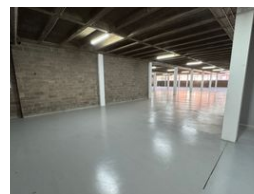
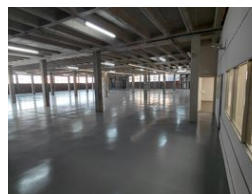
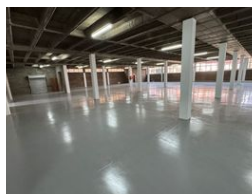
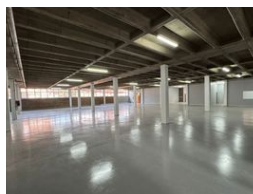
Miguel Naidoo  
0745822026  
miguel@newpointproperty.co.za

Contact Head Office

010 0354431

Office 40A  
Eden Meadows Complex  
1 Van Riebeeck Avenue  
Greenstone  
1609

2,107m<sup>2</sup> Warehouse To Let in Wynberg



R126,420 pm

**Gross Monthly Rental** R126,420 Excl. VAT  
**Monthly Rates** R1 Excl. VAT

**Monthly Levy** R1 Excl. VAT

0 6

## 2,107m<sup>2</sup> Industrial Warehouse To Let in Wynberg – Prime Location with Great Access

Unlock efficient operations with this spacious 2,107.42m<sup>2</sup> industrial warehouse, ideally situated in Wynberg, Sandton. Perfect for manufacturing, logistics, or storage, the unit features a high-clearance open-plan warehouse, excellent natural light, and a dedicated loading bay to streamline dispatch and deliveries. The layout supports racking, equipment, and easy workflow.

A secure yard, good truck access, and neat office space with ablutions and a kitchenette complete the setup. Located just minutes from the M1 highway and key routes to Sandton and Marlboro, this warehouse combines accessibility with functionality—ready for

## Features

**Zoning** Industrial

### Interior

Floor Loading Cap. 1 Tn/m<sup>2</sup>  
Air Conditioning Yes

### Exterior

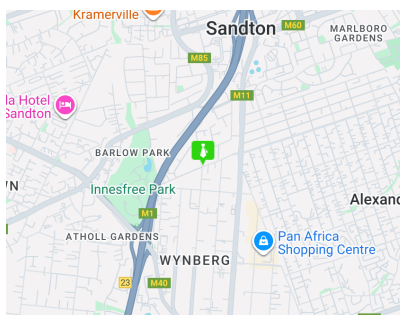
Security Yes  
Open Parking Bays 6

### Sizes

Floor Size 2,107m<sup>2</sup>  
Land Size 10,000m<sup>2</sup>  
Building Height 10m

### Extras

24 Hour Access Air Conditioner Alarm System Guard House



<https://www.newpointproperty.co.za>