



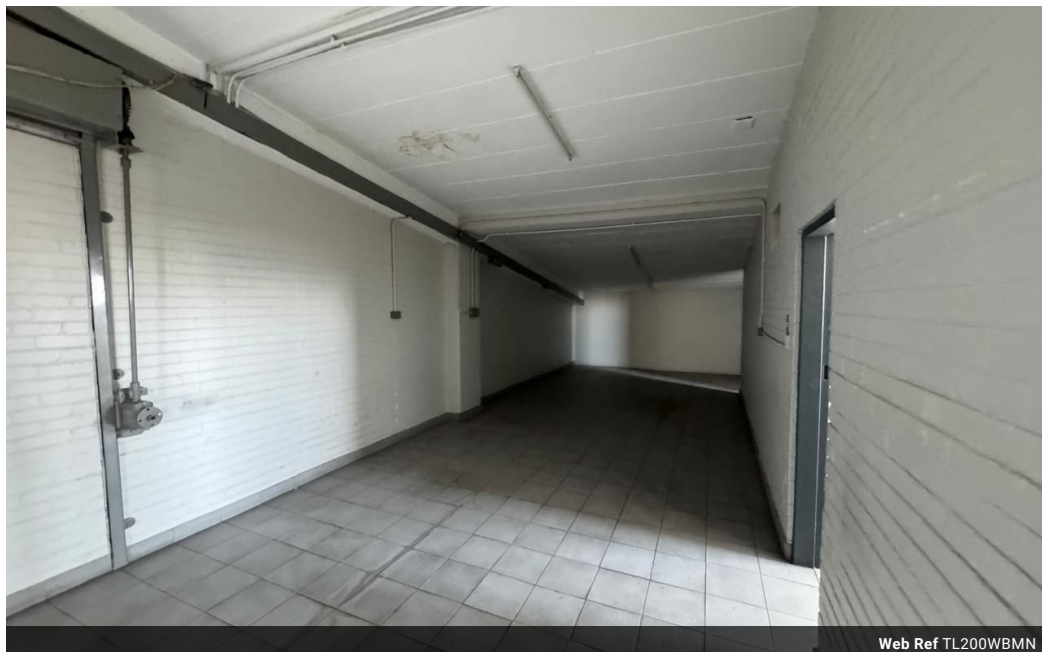
Miguel Naidoo  
0745822026  
miguel@newpointproperty.co.za

Contact Head Office

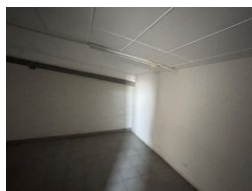
010 0354431

Office 40A  
Eden Meadows Complex  
1 Van Riebeeck Avenue  
Greenstone  
1609

## 200m<sup>2</sup> Warehouse To Let in Wynberg



Web Ref TL200WBMN



R9,600 pm

**Gross Monthly Rental** R9,600 Excl. VAT  
**Monthly Rates** R1 Excl. VAT

**Monthly Levy** R1 Excl. VAT



## 200m<sup>2</sup> industrial Warehouse Unit To Let in Wynberg

This 200m<sup>2</sup> warehouse unit in Wynberg offers a clean, functional space that's ready to support your business from day one. Whether you're involved in light manufacturing, storage, or logistics, the layout is designed to make daily operations efficient and straightforward. The unit features a high roofline for extra vertical storage or equipment clearance, along with a wide roller shutter door that makes loading and unloading easy—even for larger vehicles. Solid concrete flooring ensures durability under constant movement and weight, while ample natural light from translucent roof panels helps create a bright, productive atmosphere inside. There's 3-phase power already installed, ideal for machinery or other power-hungry operations. The open-plan floor area gives you

### Features

**Zoning** Industrial

#### Interior

Floor Loading Cap. 1 Tn/m<sup>2</sup>  
Power 3 Phase Yes  
Power Amps 100

#### Exterior

Security Yes  
Covered Parking Bays 2  
Basement Parkings 2  
Open Parking Bays 4

#### Sizes

Floor Size 200m<sup>2</sup>  
Land Size 10,000m<sup>2</sup>  
Building Height 10m

#### Extras

24 Hour Access

