



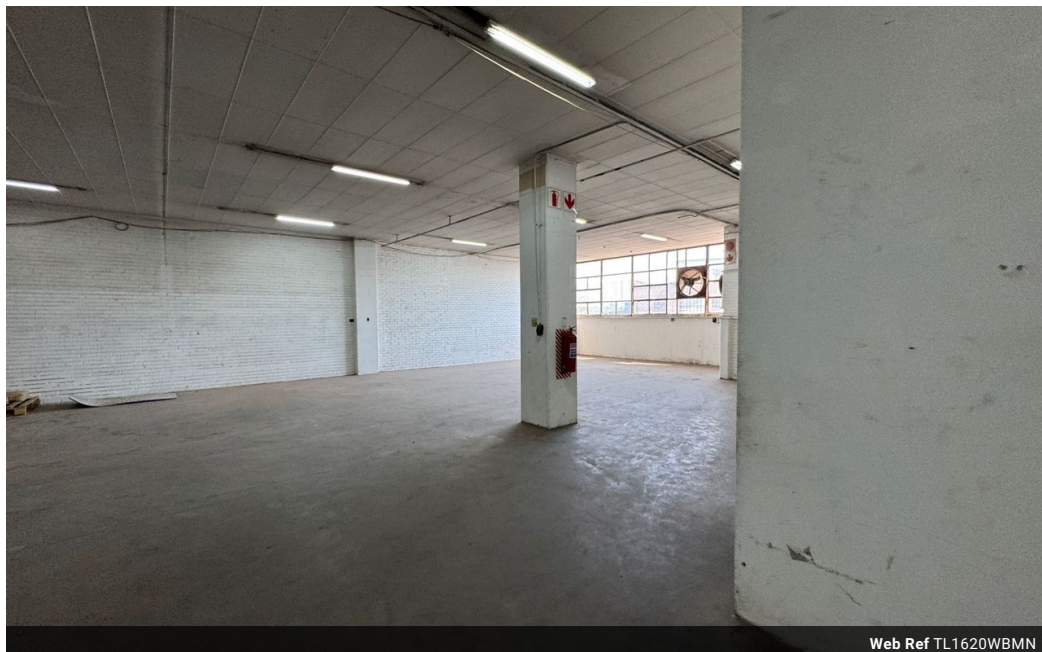
Miguel Naidoo
0745822026
miguel@newpointproperty.co.za

Contact Head Office

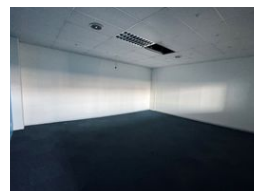
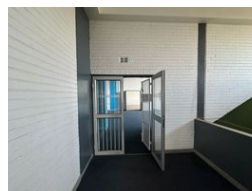
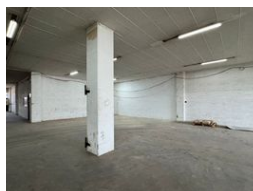
010 0354431

Office 40A
Eden Meadows Complex
1 Van Riebeeck Avenue
Greenstone
1609

1,620m² Warehouse To Let in Wynberg



Web Ref TL1620WBMN



R77,760 pm

Gross Monthly Rental R77,760 Excl. VAT

 8  6

1620m² industrial Warehouse Unit To Let in Wynberg

This expansive 1620m² industrial warehouse unit is now available To Let in the sought-after and strategically positioned industrial node of Wynberg, Johannesburg. Offering a fully open-plan layout dedicated purely to warehousing, this property is ideal for logistics, distribution, storage, or light industrial operations requiring a secure and accessible space. The warehouse boasts three large roller shutter doors positioned for optimal loading and offloading efficiency, accommodating both truck and container access with ease. The design of the unit ensures excellent flow for vehicle circulation within the premises, reducing operational bottlenecks and enhancing productivity. Internally, the warehouse is free of columns, maximizing usable floor space and allowing

Features

Zoning Industrial

Interior

Floor Loading Cap. 1 Tn/m²
Power 3 Phase Yes
Power Amps 100

Exterior

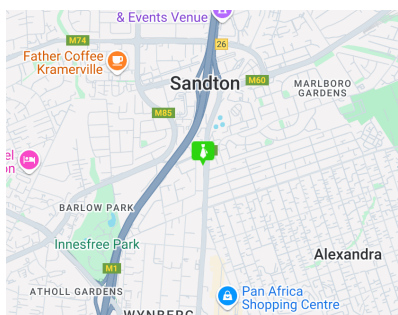
Security Yes
Covered Parking Bays 6
Basement Parkings 2
Open Parking Bays 6

Sizes

Floor Size 1,620m²
Land Size 10,000m²
Building Height 10m

Extras

24 Hour Access



<https://www.newpointproperty.co.za>