



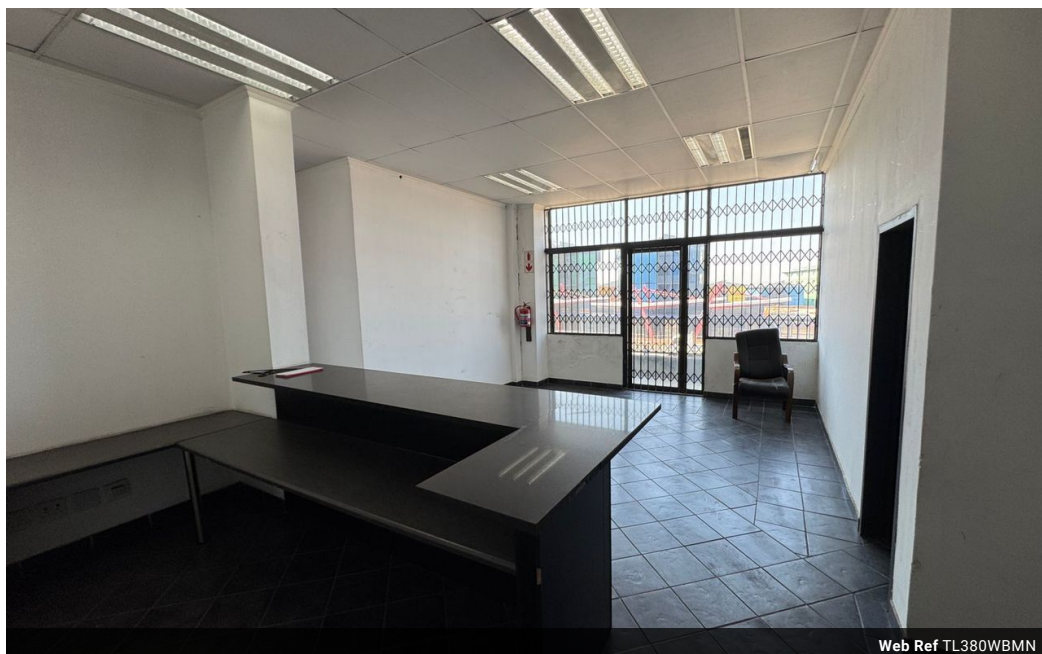
Miguel Naidoo
0745822026
miguel@newpointproperty.co.za

Contact Head Office

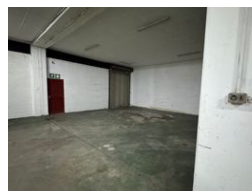
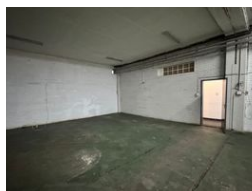
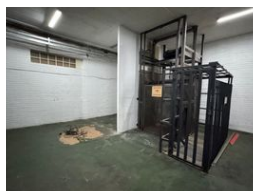
010 0354431

Office 40A
Eden Meadows Complex
1 Van Riebeeck Avenue
Greenstone
1609

380m² Warehouse To Let in Wynberg



Web Ref TL380WBMN



R18,240 pm

Gross Monthly Rental R18,240 Excl. VAT

4 0

380m² industrial Warehouse Unit To Let in Wynberg

This spacious 380m² industrial warehouse unit to let in the heart of Wynberg offers an exceptional opportunity for businesses seeking a strategically located, functional, and secure space for warehousing, light manufacturing, or distribution. The unit boasts an expansive open-plan floor area that allows for versatile operational use, enhanced by a high-volume ceiling that maximizes vertical storage potential. A prominent feature is the large roller shutter door, which provides seamless drive-in access for trucks and delivery vehicles, facilitating effortless loading and unloading of goods. With wide clearance and easy maneuverability, it caters to a range of industrial requirements. The warehouse is designed with a durable concrete floor to support heavy machinery

Features

Zoning Industrial

Interior

Floor Loading Cap.	1 Tn/m ²
Power 3 Phase	Yes
Power Amps	100

Exterior

Security	Yes
Covered Parking Bays	2
Basement Parkings	2

Sizes

Floor Size	380m ²
Land Size	10,000m ²
Building Height	10m

Extras

24 Hour Access

