



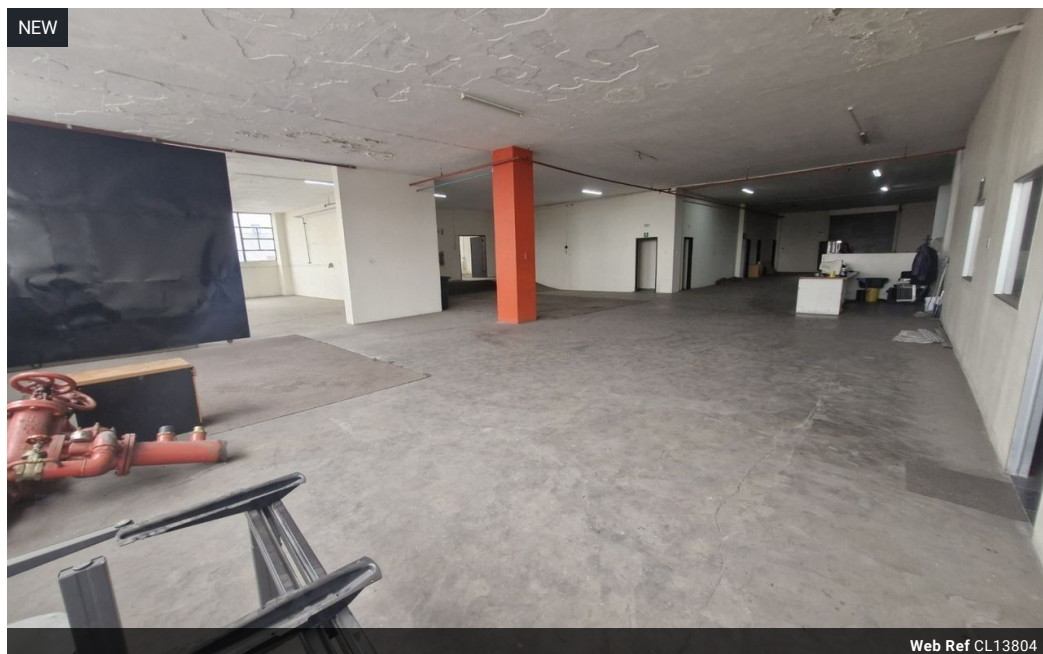
Miguel Naidoo
 0745822026
miguel@newpointproperty.co.za

Contact Head Office

010 0354431

Office 40A
 Eden Meadows Complex
 1 Van Riebeeck Avenue
 Greenstone
 1609

1,140m² Warehouse To Let in Wynberg



Web Ref CL13804



R51,300 pm

Gross Monthly Rental R51,300 Excl. VAT

0 0

Prime 1,140m² Warehouse in Wynberg, Sandton – Ideal for Light Industrial Use

Unlock efficiency and visibility with this well-located 1,140m² warehouse in the heart of Wynberg, Sandton. Featuring an on-grade roller shutter door, excellent height, and plenty of natural light, this open-plan facility is perfect for storage, light manufacturing, or distribution operations.

Set within a secure complex with 24-hour access control and a professional tenant mix, the property offers ample parking and direct access to key transport routes including the M1 and Grayston Drive. This is a strategic opportunity for businesses looking to

Features

Zoning Industrial

Interior

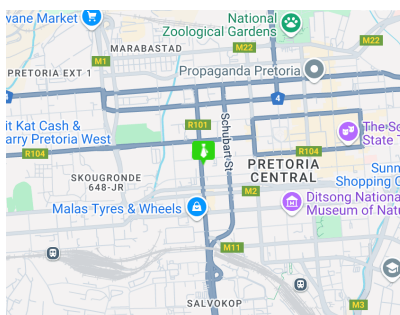
Floor Loading Cap.	10 Tn/m ²
Power 3 Phase	Yes
Power Amps	150

Exterior

Security	Yes
----------	-----

Sizes

Floor Size	1,140m ²
Land Size	5,000m ²
Building Height	15m



<https://www.newpointproperty.co.za>