



Miguel Naidoo
0745822026
miguel@newpointproperty.co.za

Contact Head Office

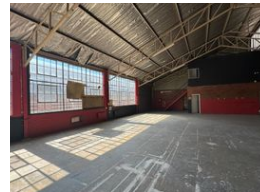
010 0354431

Office 40A
Eden Meadows Complex
1 Van Riebeeck Avenue
Greenstone
1609

759m² Warehouse To Let in Wynberg



Web Ref TL759WBMN



R37,950 pm

Gross Monthly Rental R37,950 Excl. VAT
Monthly Rates R1 Excl. VAT

Monthly Levy R1 Excl. VAT



0



4

759m² industrial Warehouse Unit To Let in Wynberg

This neat and spacious 759m² warehouse in Wynberg, Sandton offers the perfect blend of functionality, flexibility, and affordability for growing businesses. With its clean layout and high clearance ceilings (6–8m), the space is ideal for light manufacturing, storage, or logistics operations. The large roller shutter door allows smooth access for trucks and deliveries, and the concrete flooring is built to handle forklifts and heavy loads with ease. Natural light pours in from the roof panels, supported by bright LED lighting, creating a well-lit working environment throughout the day. Inside, there's already a basic but tidy office area in place, along with well-maintained staff ablutions—so you can get started with minimal setup. With three-phase power available and

Features

Building Name Zoning

Mazzoni House
Industrial

Interior

Floor Loading Cap.
Power 3 Phase

1 Tn/m²
Yes

Exterior

Security
Open Parking Bays

Yes
4

Sizes

Floor Size
Land Size

759m²
10,000m²

