



Miguel Naidoo  
0745822026  
miguel@newpointproperty.co.za

Contact Head Office

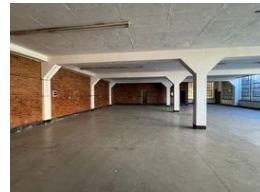
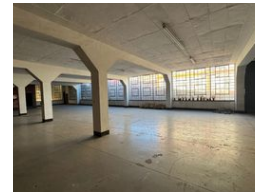
010 0354431

Office 40A  
Eden Meadows Complex  
1 Van Riebeeck Avenue  
Greenstone  
1609

641m<sup>2</sup> Warehouse To Let in Wynberg



Web Ref TL641WBMN



R32,050 pm

**Gross Monthly Rental** R32,050 Excl. VAT  
**Monthly Rates** R1 Excl. VAT

**Monthly Levy** R1 Excl. VAT

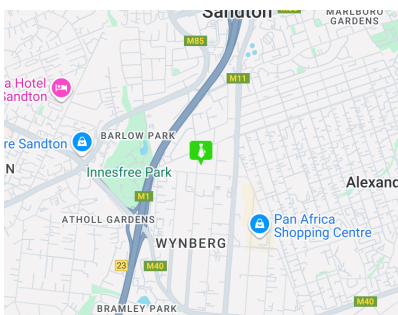
 2  3

641m<sup>2</sup> industrial Warehouse Unit To Let in Wynberg

This 641m<sup>2</sup> industrial warehouse in Wynberg is a practical, well-priced option for businesses needing flexible space that works as hard as they do. With high ceilings (up to 8m), a large roller shutter door for easy vehicle access, and a strong, level floor built for heavy use, it's ideal for storage, light manufacturing, or logistics. The layout is simple and open, making it easy to adapt the space to suit your needs—whether you're installing racking, machinery, or creating a clean workflow. There's three-phase power already in place, good lighting from skylights and LEDs, and enough room to build out a mezzanine or office section if you need more structure. It's a clean, functional space that offers immediate usability without the cost or hassle of a major fit-out.

## Features

<b>Building Name</b>	Mazzoni House			<b>Sizes</b>	
<b>Zoning</b>	Industrial			Floor Size	641m <sup>2</sup>
<b>Interior</b>				Land Size	10,000m <sup>2</sup>
Floor Loading Cap.	1 Tn/m <sup>2</sup>	<b>Exterior</b>		Building Height	10m
		Covered Parking Bays	2		
		Open Parking Bays	3		
<b>Extras</b>					
24 Hour Access					



<https://www.newpointproperty.co.za>