



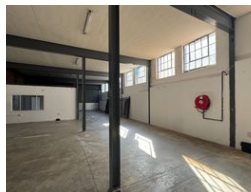
Miguel Naidoo  
0745822026  
miguel@newpointproperty.co.za

Contact Head Office

010 0354431

Office 40A  
Eden Meadows Complex  
1 Van Riebeeck Avenue  
Greenstone  
1609

## 760m<sup>2</sup> Warehouse To Let in Wynberg



R44,000 pm

**Gross Monthly Rental** R44,000 Excl. VAT  
**Monthly Rates** R1 Excl. VAT

**Monthly Levy** R1 Excl. VAT

2 4

## 760m<sup>2</sup> industrial Warehouse Unit To Let in Wynberg

This 760m<sup>2</sup> industrial warehouse unit in Wynberg offers a well-balanced mix of functional warehouse space and practical office facilities, making it ideal for logistics, manufacturing, or storage operations. The warehouse features high ceilings, robust flooring for heavy-duty use, and a large roller shutter door for smooth vehicle access. It's equipped with three-phase power, ample natural and artificial lighting, and includes private offices, a reception area, kitchen, and staff ablutions. Secure parking bays and 24-hour access-controlled security provide peace of mind, while the unit's clean, open layout allows for flexible operational setup to suit a variety of business needs.

Strategically located near major highways including the M1 and M2, and close to Grayston Drive, the unit ensures excellent

### Features

**Zoning** Industrial

#### Interior

Floor Loading Cap.	1 Tn/m <sup>2</sup>
Air Conditioning	Yes
Power 3 Phase	Yes
Power Amps	200

#### Exterior

Covered Parking Bays	2
Open Parking Bays	4

#### Sizes

Floor Size	760m <sup>2</sup>
Land Size	10,000m <sup>2</sup>
Building Height	10m

#### Extras

24 Hour Access

