



Miguel Naidoo
0745822026
miguel@newpointproperty.co.za

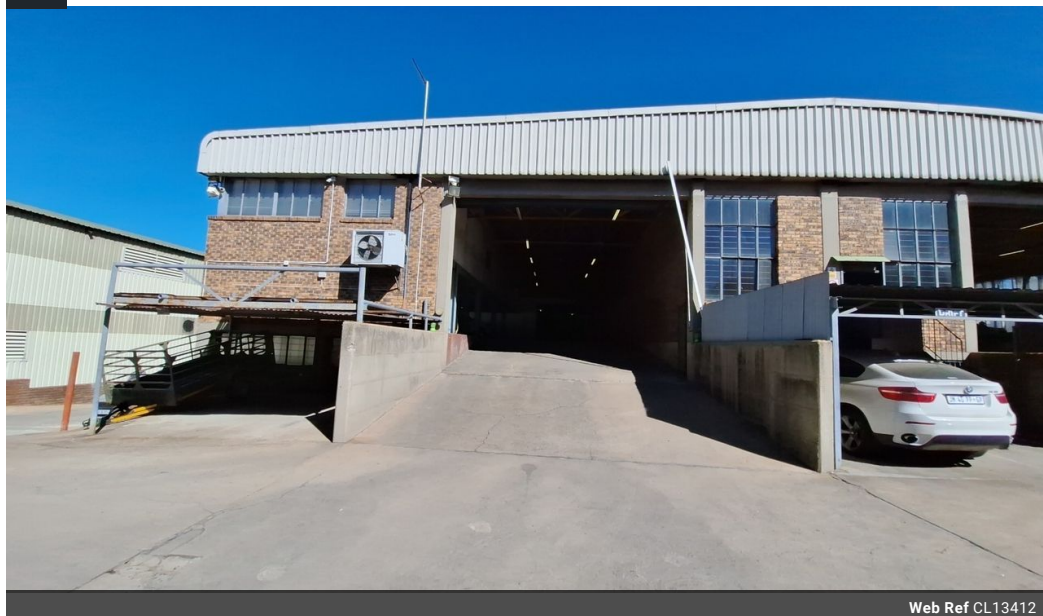
Contact Head Office

010 0354431

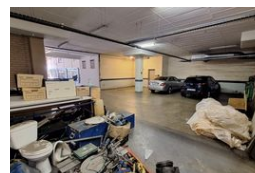
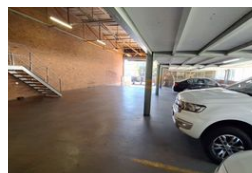
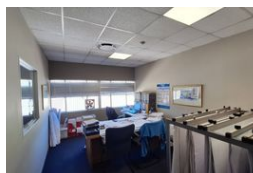
Office 40A
Eden Meadows Complex
1 Van Riebeeck Avenue
Greenstone
1609

1,038m² Warehouse To Let in Wynberg

NEW



Web Ref CL13412



R61,355 pm

Gross Monthly Rental R61,355 Excl. VAT
Monthly Rates R4,515.2 Excl. VAT

Monthly Levy R850.8 Excl. VAT

5 0

Prime Industrial Space in Wynberg with Office & Warehouse Balance

Position your business in the heart of Wynberg, Sandton, with this 1,038m² industrial property offering a perfect blend of 512m² modern office space and 526m² functional warehouse area. The air-conditioned offices include a reception, kitchen, two bathrooms, and private and open-plan workspaces—designed to support daily operations in comfort. A dependable three-phase power supply ensures seamless workflow for light manufacturing, distribution, or technical operations.

The property offers excellent accessibility, covered parking for staff and visitors, and 24-hour security surveillance for peace of mind. Located in one of Johannesburg's most established industrial hubs with quick access to key transport routes, this facility is

Features

Zoning Industrial

Interior

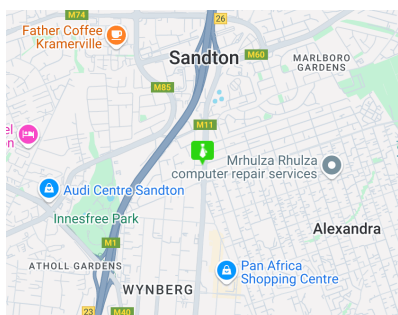
Air Conditioning	Yes
Power 3 Phase	Yes

Exterior

Security	Yes
Covered Parking Bays	5

Sizes

Floor Size	1,038m ²
Land Size	1,038m ²



<https://www.newpointproperty.co.za>