



Miguel Naidoo
0745822026
miguel@newpointproperty.co.za

Contact Head Office

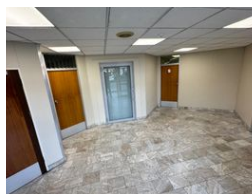
010 0354431

Office 40A
Eden Meadows Complex
1 Van Riebeeck Avenue
Greenstone
1609

254m² Warehouse To Let in Wynberg



Web Ref TL254WBMN



R15,240 pm

Gross Monthly Rental R15,240 Excl. VAT
Monthly Rates R1 Excl. VAT

Monthly Levy R1 Excl. VAT

0 0

254m² industrial Warehouse Unit To Let in Wynberg

Positioned in the vibrant and well-established industrial heart of Wynberg, Sandton, this 254m² sectional-title unit presents an outstanding opportunity for businesses looking to secure a well-balanced, functional industrial space. Purposefully split into 106m² of premium office space and 149m² of clean, efficient warehouse floor, the unit is thoughtfully designed to support a wide range of industries—from light manufacturing, assembly, and warehousing to distribution, technical servicing, or creative production. The warehouse area features a practical open-plan layout with solid concrete flooring, excellent internal height, and a roller shutter door that provides seamless access for loading and offloading operations. Whether you're receiving daily deliveries or

Features

Zoning Industrial

Interior

Floor Loading Cap.	1 Tn/m ²
Air Conditioning	Yes
Power 3 Phase	Yes
Power Amps	600

Exterior

Security	Yes
----------	-----

Sizes

Floor Size	254m ²
Land Size	10,000m ²
Building Height	10m

