



Miguel Naidoo
0745822026
miguel@newpointproperty.co.za

Contact Head Office

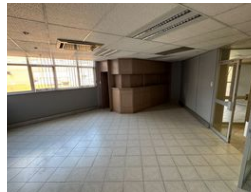
010 0354431

Office 40A
Eden Meadows Complex
1 Van Riebeeck Avenue
Greenstone
1609

2,107m² Warehouse To Let in Wynberg



Web Ref TL2107WBMN



R126,420 pm

Gross Monthly Rental R126,420 Excl. VAT
Monthly Rates R1 Excl. VAT

Monthly Levy R1 Excl. VAT

0 6

2107.42m² industrial Warehouse Unit To Let in Wynberg

This expansive 2,107.42m² industrial warehouse is now available to let in the well-established commercial node of Wynberg, Sandton. Ideally positioned for logistics, manufacturing, or storage, this unit offers a robust combination of accessibility, space, and practical features designed to support your business's daily operations. The property features a large open-plan warehouse floor with excellent internal height, allowing for racking and vertical storage solutions. Natural lighting fills the space through high windows, and the layout provides ample room for movement, equipment, and inventory management. A dedicated loading bay allows for smooth in-and-out goods movement, making deliveries and dispatch operations efficient and hassle-free.

Features

Zoning Industrial

Interior

Floor Loading Cap. 1 Tn/m²
Air Conditioning Yes

Exterior

Security Yes
Open Parking Bays 6

Sizes

Floor Size 2,107m²
Land Size 10,000m²
Building Height 10m

Extras

24 Hour Access Air Conditioner Alarm System Guard House

