



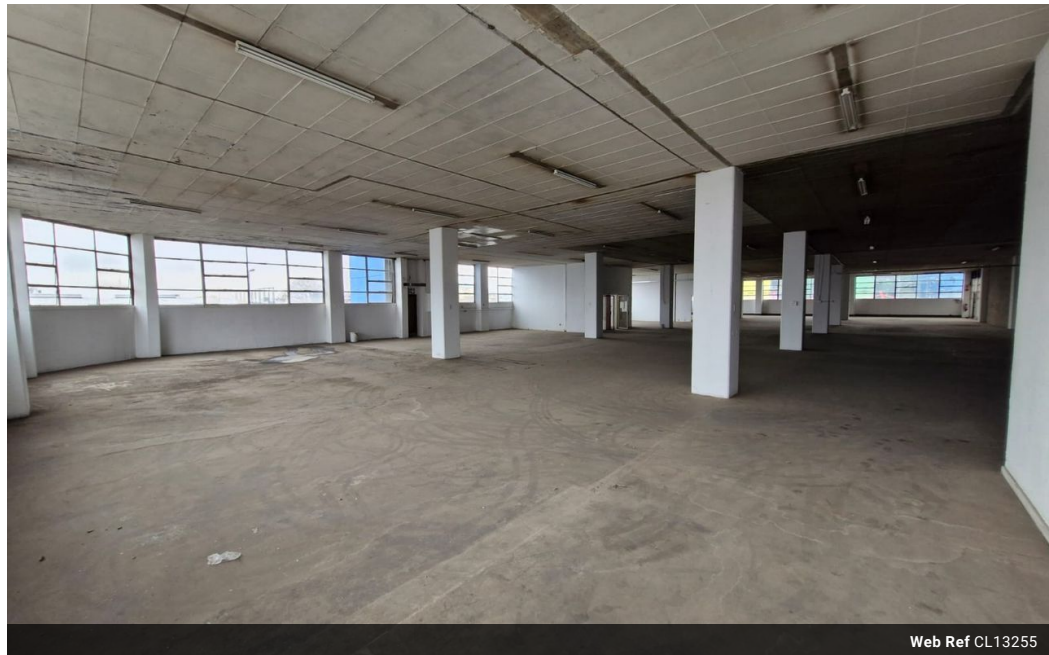
Dane Davids
0844782022
dane@newpointproperty.co.za

Contact Head Office

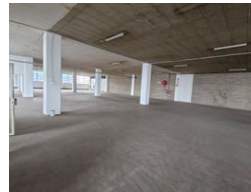
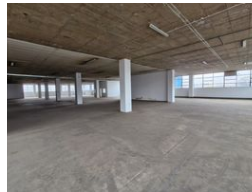
010 0354431

Office 40A
Eden Meadows Complex
1 Van Riebeeck Avenue
Greenstone
1609

1,260m² Warehouse To Let in Wynberg



Web Ref CL13255



R56,700 pm

Gross Monthly Rental R56,700 Excl. VAT



Functional 1,260m² Industrial Warehouse in Prime Wynberg, Sandton Location

Located in the vibrant industrial hub of Wynberg, Sandton, this 1,260m² warehouse offers a versatile space ideal for light manufacturing, distribution, or storage operations. The layout includes two offices, two bathrooms, and compact storage areas, with room to expand your office setup as needed. Convenient rooftop parking adds an extra layer of security and accessibility for staff and clients.

The warehouse is designed for efficiency, featuring a roller shutter door for easy loading, generous natural light throughout, and a dependable three-phase power supply to support a range of business needs. With excellent access to main transport routes, this

Features

Zoning Industrial

Interior

Floor Loading Cap. 10 Tn/m²
Power 3 Phase Yes
Power Amps 150

Exterior

Security Yes

Sizes

Floor Size 1,260m²
Land Size 5,000m²
Building Height 5m

