

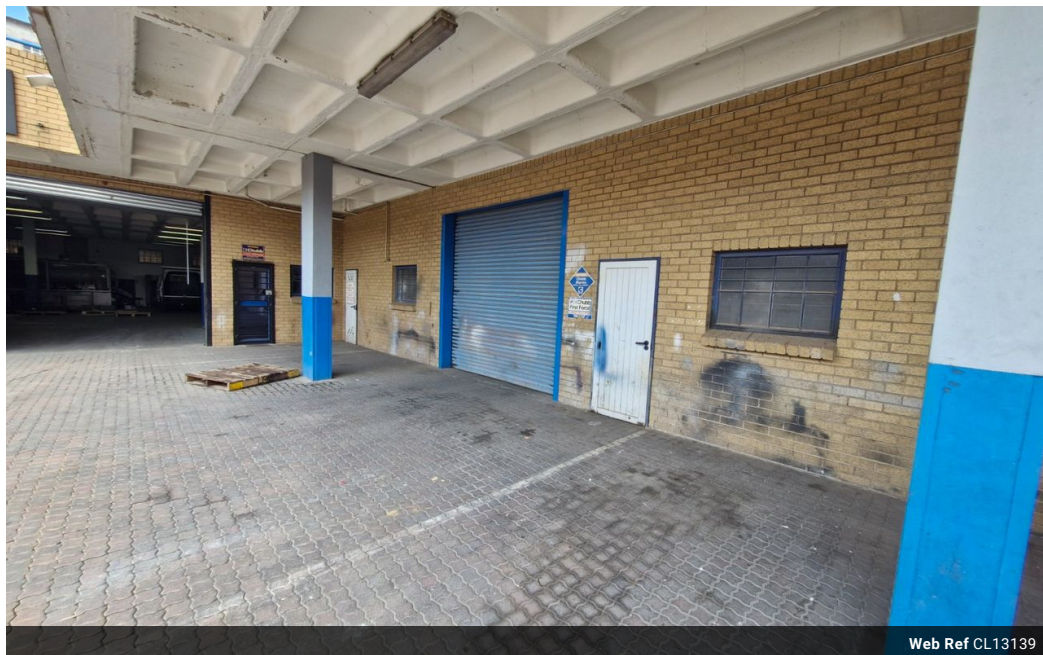


Dane Davids
0844782022
dane@newpointproperty.co.za

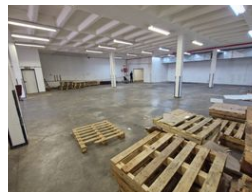
Contact Head Office

010 0354431

Office 40A
Eden Meadows Complex
1 Van Riebeeck Avenue
Greenstone
1609



Web Ref CL13139



R24,700 pm

Gross Monthly Rental R24,700 Excl. VAT
Monthly Rates R1 Excl. VAT

Monthly Levy R1 Excl. VAT



0



0

Mini-Unit Warehouse in Prime Wynberg Location – Ideal for Light Industrial Use

Position your business in the heart of Wynberg Motor City with this well-designed mini-unit warehouse. Featuring a spacious open-plan layout, on-grade roller shutter access, and excellent natural lighting, this unit is perfect for storage, light manufacturing, or distribution. A shared yard offers added convenience for deliveries and truck maneuvering.

Located just minutes from the M1 and N3 highways, this sought-after Sandton address ensures seamless connectivity to key business hubs. Set within a secure, access-controlled park with 24/7 security, the unit provides a professional and reliable

Features

Zoning Industrial

Interior

Floor Loading Cap.	10 Tn/m²
Power 3 Phase	Yes
Power Amps	100

Exterior

Security	Yes
----------	-----

Sizes

Floor Size	385m²
Land Size	5,000m²

