



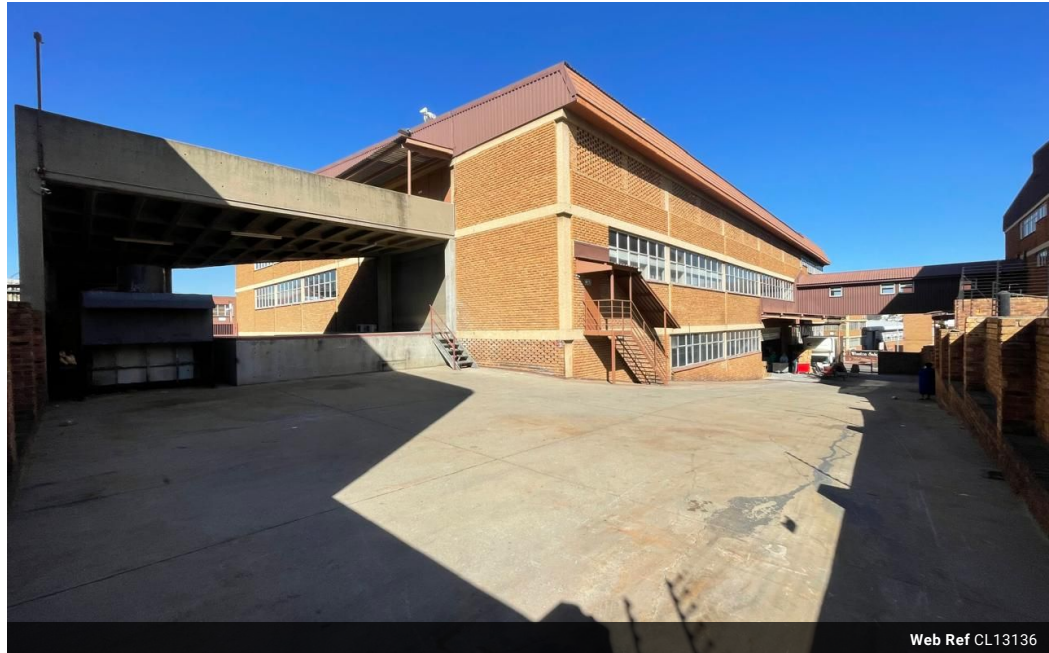
Dane Davids
0844782022
dane@newpointproperty.co.za

Contact Head Office

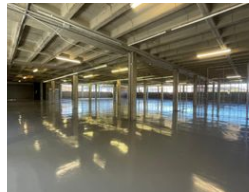
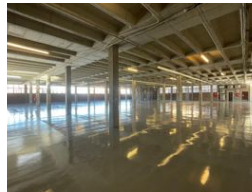
010 0354431

Office 40A
Eden Meadows Complex
1 Van Riebeeck Avenue
Greenstone
1609

2,123m² Warehouse To Let in Wynberg



Web Ref CL13136



R116,765 pm

Gross Monthly Rental R116,765 Excl. VAT

2 5

Prime Industrial Facility in Wynberg, Sandton – Efficient Layout with Dock Access

Unlock operational efficiency with this standout industrial property in Wynberg, Sandton, designed for seamless logistics and business flow. The warehouse features a large roller shutter door and two dock levelers, ensuring smooth loading and unloading. With a well-planned division between warehouse and office space, the property caters to both production and administrative needs in one functional layout.

Engineered for heavy-duty use, the facility boasts three-phase power and a durable epoxy-coated floor, supporting a wide range of industrial operations. Staff are well accommodated with modern bathrooms and a fully fitted kitchen. Situated in a strategic location with quick access to Sandton's key transport routes, this property is the ideal base for growing, high-performance

Features

Zoning Industrial

Interior

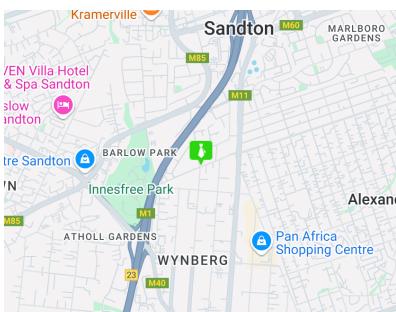
Air Conditioning	Yes
Power 3 Phase	Yes
Power Amps	50

Exterior

Security	Yes
Covered Parking Bays	2
Open Parking Bays	5

Sizes

Floor Size	2,123m ²
Land Size	12,141m ²



<https://www.newpointproperty.co.za>