



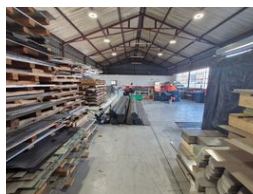
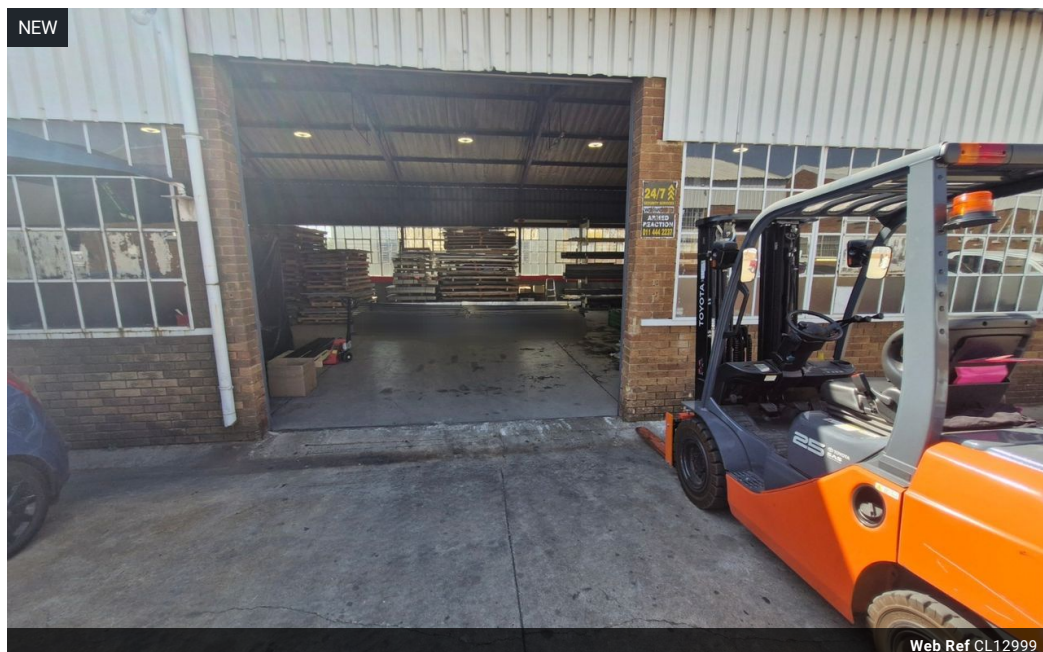
Dane Davids  
0844782022  
dane@newpointproperty.co.za

Contact Head Office

010 0354431

Office 40A  
Eden Meadows Complex  
1 Van Riebeeck Avenue  
Greenstone  
1609

400m<sup>2</sup> Warehouse To Let in Wynberg



R36,000 pm

Gross Monthly Rental R36,000 Excl. VAT



## Versatile Warehouse in Wynberg, Sandton – Ideal for Light Industrial or Distribution

Unlock the full potential of your operations with this warehouse in the sought-after Wynberg area of Sandton. Designed for productivity, the property features a high roofline, open-plan layout, and excellent natural light. A large roller shutter door ensures seamless loading and offloading, while a robust three-phase power supply caters to industrial equipment. The warehouse also includes two bathrooms, two offices, and rooftop parking, with potential for office expansion.

Positioned near major transport routes, including the M1 highway, this facility offers outstanding connectivity for logistics and easy staff access. Located in a secure industrial precinct with established security controls, the property provides peace of mind.

## Features

<b>Building Name</b>	SE Andries Street		
<b>Zoning</b>	Industrial		
<b>Interior</b>		<b>Sizes</b>	
Floor Loading Cap.	10 Tn/m <sup>2</sup>	Floor Size	400m <sup>2</sup>
Air Conditioning	Yes	Land Size	10,000m <sup>2</sup>
Power 3 Phase	Yes	Building Height	8m
Power Amps	100		

