



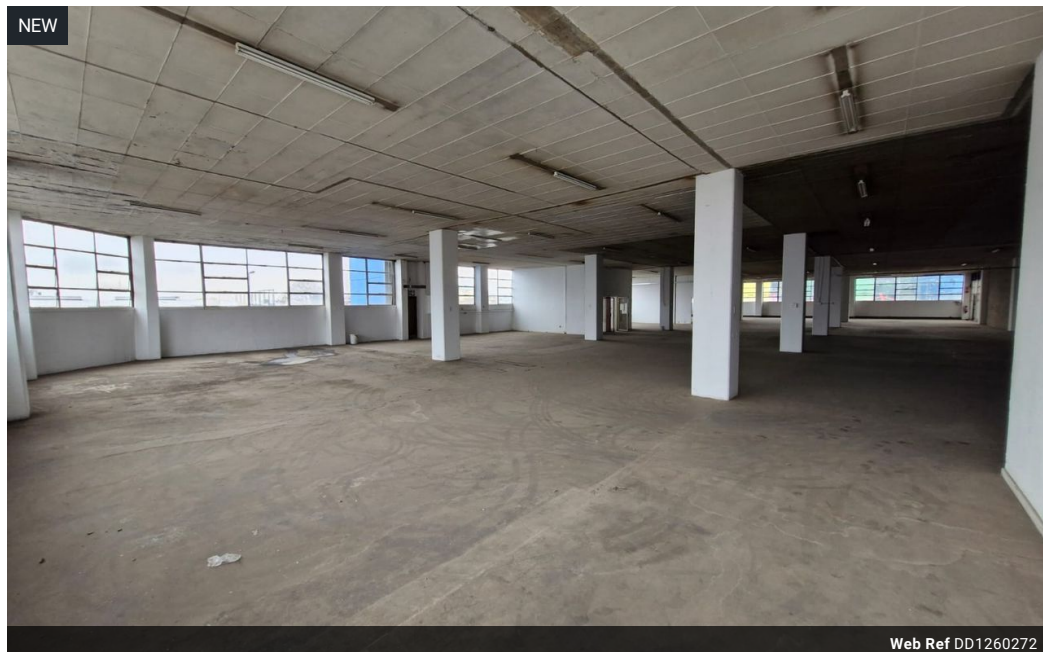
Dane Davids
 0844782022
 dane@newpointproperty.co.za

Contact Head Office

010 0354431

Office 40A
 Eden Meadows Complex
 1 Van Riebeeck Avenue
 Greenstone
 1609

1,260m² Warehouse To Let in Wynberg



Web Ref DD1260272



R56,700 pm

Gross Monthly Rental R56,700 Excl. VAT

0 0

Versatile 1,260m² Industrial Warehouse in Prime Wynberg, Sandton

Positioned in the bustling heart of Wynberg, Sandton, this 1,260m² industrial warehouse offers a practical and flexible space for a variety of commercial operations. The layout includes two bathrooms, two offices, and compact storage areas, with potential to expand the office component as your business grows. Rooftop parking ensures easy access for staff and clients while also enhancing security and site control.

Designed for smooth operations, the warehouse features a roller shutter door for efficient loading and unloading, ample natural light for a bright workspace, and a reliable three-phase power supply to accommodate diverse industrial requirements. Whether you're in distribution, light manufacturing, or warehousing, this well-located facility is ready to support your business. Contact us

Features

Zoning Industrial

Interior

Floor Loading Cap.	10 Tn/m ²
Power 3 Phase	Yes
Power Amps	150

Exterior

Security	Yes
----------	-----

Sizes

Floor Size	1,260m ²
Land Size	5,000m ²
Building Height	5m



<https://www.newpointproperty.co.za>