



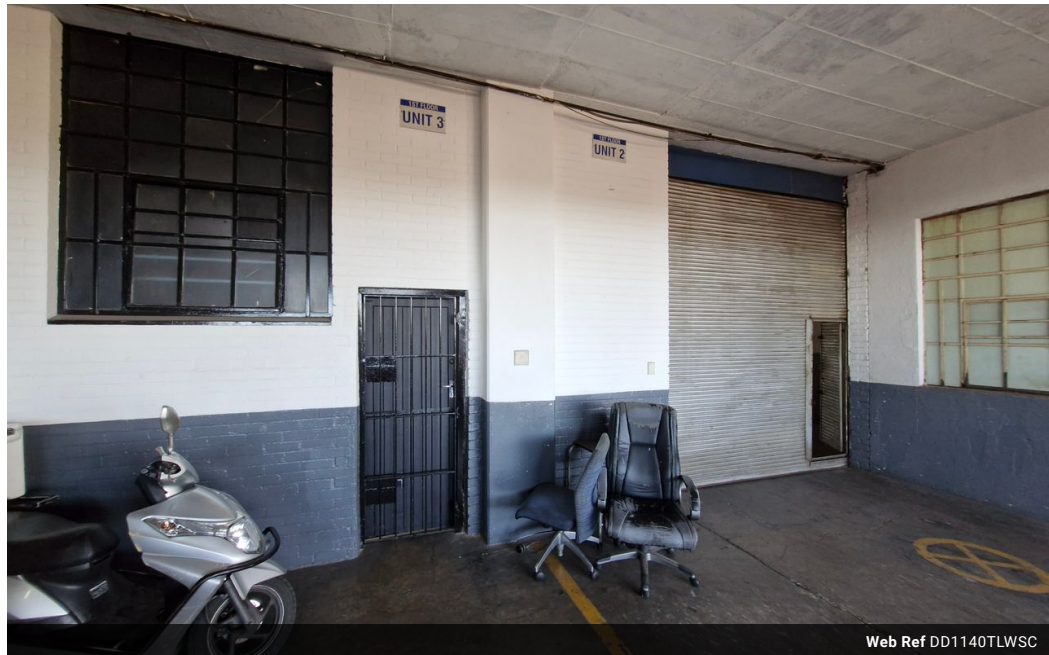
Dane Davids
0844782022
dane@newpointproperty.co.za

Contact Head Office

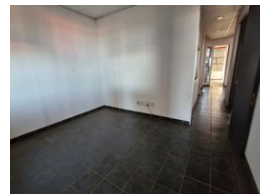
010 0354431

Office 40A
Eden Meadows Complex
1 Van Riebeeck Avenue
Greenstone
1609

1,140m² Warehouse To Let in Wynberg



Web Ref DD1140TLWSC



R51,300 pm

Gross Monthly Rental R51,300 Excl. VAT
Monthly Rates R1 Excl. VAT

Monthly Levy R1 Excl. VAT

0 0

Industrial warehouse to let in Wynberg

This 1,140m² warehouse offers an efficient and practical space ideal for a range of industrial operations. The unit features a large on-grade roller shutter door, allowing for seamless access for loading and offloading directly from delivery vehicles. The open-span design provides excellent height and floor space, accommodating both storage and manufacturing needs. Ample natural light and solid concrete flooring enhance functionality, while the layout supports optimal workflow.

Located in a secure industrial park, the property includes 3-phase power supply and sufficient yard space for vehicle maneuverability. The park offers 24-hour security and easy access to major transport routes, ensuring logistical efficiency. Whether

Features

Zoning Industrial

Interior

Floor Loading Cap. 10 Tn/m²
Power 3 Phase Yes
Power Amps 200

Exterior

Security Yes

Sizes

Floor Size 1,140m²
Land Size 5,000m²