



Dane Davids
0844782022
dane@newpointproperty.co.za

Contact Head Office

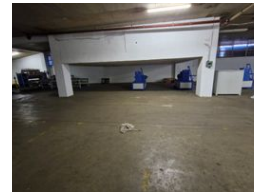
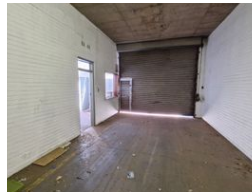
010 0354431

Office 40A
Eden Meadows Complex
1 Van Riebeeck Avenue
Greenstone
1609

770m² Warehouse To Let in Wynberg



Web Ref DD770TLWYN



R34,650 pm

Gross Monthly Rental R34,650 Excl. VAT
Monthly Rates R1 Excl. VAT

Monthly Levy R1 Excl. VAT



Prime 770m² Warehouse to Let in the Heart of Wynberg, Sandton – Ideal for Efficient Operations and E

Positioned in the well-established industrial node of Wynberg, Sandton, this 770m² warehouse is now available to let and offers a highly functional space for businesses seeking efficiency, accessibility, and practicality. The warehouse boasts a generous open-plan layout, ideal for a wide variety of industrial or logistical operations. Whether you're in manufacturing, distribution, or warehousing, the expansive interior allows for flexible workflow design and racking systems to optimize storage and productivity. The facility is equipped with a large on-grade roller shutter door, ensuring seamless access for trucks and delivery vehicles, and making loading and unloading operations quick and hassle-free. Natural lighting floods the space during the day, creating a bright

Features

Zoning Industrial

Interior

Floor Loading Cap. 10 Tn/m²
Power 3 Phase Yes
Power Amps 200

Exterior

Security Yes

Sizes

Floor Size 770m²
Land Size 5,000m²