



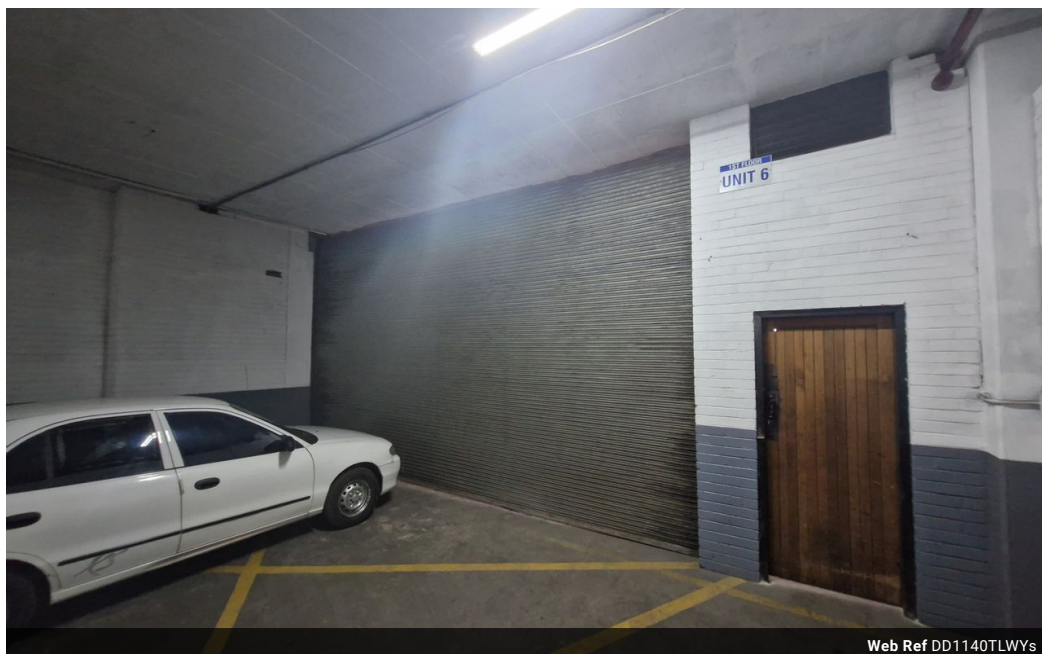
Dane Davids
0844782022
dane@newpointproperty.co.za

Contact Head Office

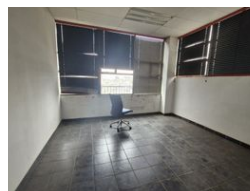
010 0354431

Office 40A
Eden Meadows Complex
1 Van Riebeeck Avenue
Greenstone
1609

1,140m² Warehouse To Let in Wynberg



Web Ref DD1140TLWys



R51,300 pm

Gross Monthly Rental R51,300 Excl. VAT
Monthly Rates R1 Excl. VAT

Monthly Levy R1 Excl. VAT



Neat split level warehouse unit To Let in Wynberg Sandton

This industrial warehouse available for lease in Wynberg, Sandton, offers an excellent location for businesses seeking security and accessibility. It comes equipped with an on-grade roller shutter door for seamless loading and unloading, ensuring efficient operations for various industrial uses. The spacious interior is well-maintained, making it ideal for warehousing, distribution, or light manufacturing.

Located within a secure industrial park, the property benefits from 24-hour security and controlled access, providing peace of mind. Its strategic position offers easy access to major highways, making it an ideal choice for businesses requiring proximity to

Features

Zoning Industrial

Interior

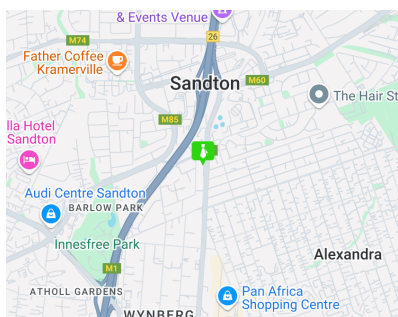
Floor Loading Cap. 10 Tn/m²
Power 3 Phase Yes
Power Amps 200

Exterior

Security Yes

Sizes

Floor Size 1,140m²
Land Size 4,000m²
Building Height 20m



<https://www.newpointproperty.co.za>