



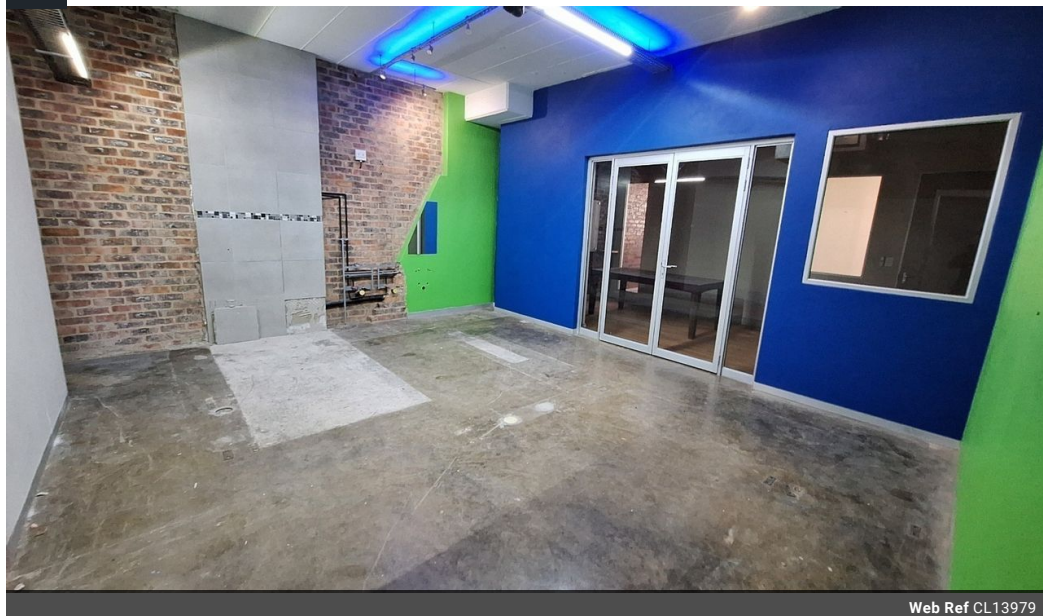
Miguel Naidoo
0745822026
miguel@newpointproperty.co.za

Contact Head Office

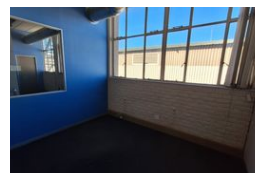
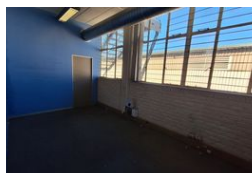
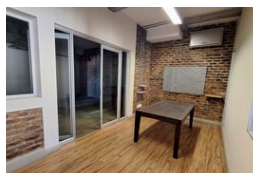
010 0354431

Office 40A
Eden Meadows Complex
1 Van Riebeeck Avenue
Greenstone
1609

NEW



Web Ref CL13979



R17,270 pm

Gross Monthly Rental R17,270 Excl. VAT
Monthly Rates R1,227 Excl. VAT

Monthly Levy R171 Excl. VAT

0 0

Prime 282m² Office & Showroom Space in Wynberg, Sandton – Ideal for Client-Facing Businesses

Elevate your business presence with this 282m² office and showroom unit, perfectly situated in the bustling commercial hub of Wynberg, Sandton. Featuring multiple private offices and a dedicated showroom area, this space is tailored for client interaction, product display, or sales operations. Located in a secure, access-controlled building with 24-hour security, it offers a polished and professional setting for growing enterprises.

The unit comes fully air-conditioned and includes two bathrooms, a kitchen, and a compact warehouse component, providing extra versatility for storage or light industrial use. Enjoy easy access to major routes and nearby amenities, making this a convenient and

Features

Zoning Industrial

Interior

Air Conditioning Yes
Power 3 Phase Yes

Exterior

Security Yes

Sizes

Floor Size 282m²
Land Size 282m²

