

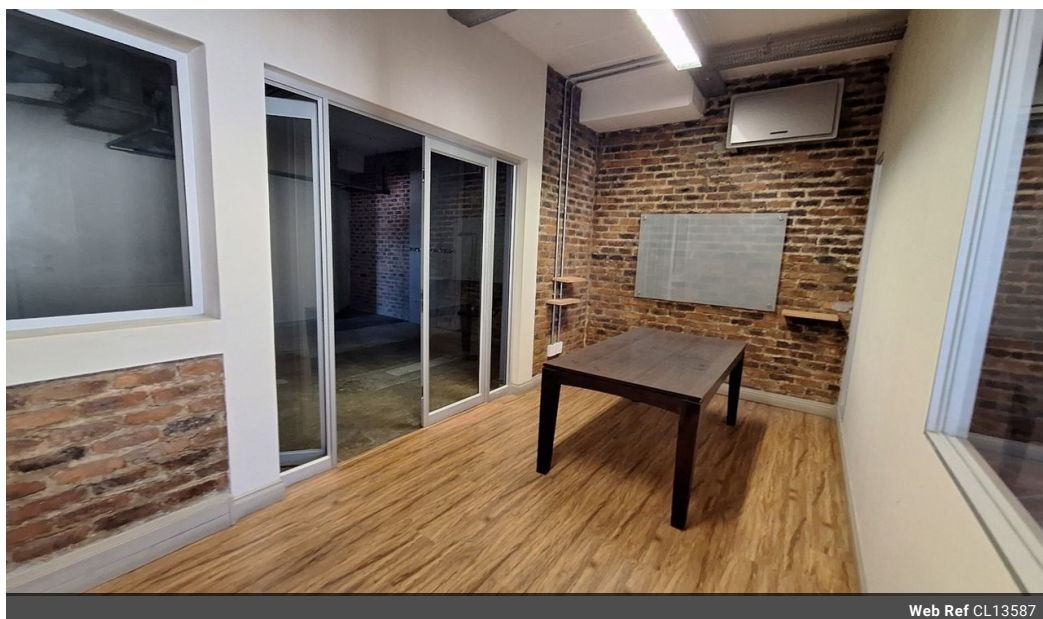


Miguel Naidoo  
0745822026  
miguel@newpointproperty.co.za

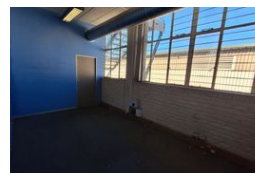
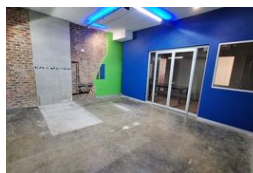
Contact Head Office

010 0354431

Office 40A  
Eden Meadows Complex  
1 Van Riebeeck Avenue  
Greenstone  
1609



Web Ref CL13587



R17,270 pm

**Gross Monthly Rental** R17,270 Excl. VAT  
**Monthly Rates** R1,227 Excl. VAT

**Monthly Levy** R171 Excl. VAT

0 0

## Polished Office & Showroom Space in Prime Wynberg Location

Position your business for success with this 282m² office and showroom unit in the heart of Wynberg, Sandton. Designed for client-facing operations, the property includes multiple private offices and a dedicated showroom area, ideal for sales, presentations, or product display. Located in a secure, well-managed building with 24-hour security, it offers a professional environment for growing businesses.

Comfort and functionality come standard with full air conditioning, two bathrooms, and a kitchen to support daily operations. A compact warehouse component adds flexibility for storage or light industrial use. With quick access to key routes and amenities, this versatile unit is an excellent choice for companies seeking convenience, visibility, and value. Enquire today to schedule your

## Features

**Zoning** Industrial

### Interior

Air Conditioning Yes  
Power 3 Phase Yes

### Exterior

Security Yes

### Sizes

Floor Size 282m²  
Land Size 282m²

