



**Miguel Naidoo**  
0745822026  
miguel@newpointproperty.co.za



**Tyrone Varga**  
Principal Property  
Practitioner  
Registered with PPRA

(FFC 114 321 7)

072 869 3246

tyrone@newpointproperty.co.za

Contact Head Office

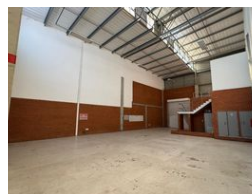
010 0354431

Office 40A  
Eden Meadows Complex  
1 Van Riebeeck Avenue  
Greenstone  
1609

## 290m² Warehouse To Let in Longlake



Web Ref CL13919



R22,910 pm

**Gross Monthly Rental** R22,910 Excl. VAT  
**Monthly Rates** R3,735.2 Excl. VAT

**Monthly Levy** R4,640 Excl. VAT



0



3

### Flexible 290m² Industrial Unit To Let in Longlake – High Ceilings, Mezzanine & Prime Location

Unlock your business potential with this 290m² industrial unit in the secure and well-established Longlake industrial park. Ideal for warehousing, light manufacturing, distribution, or storage, the unit features a generous open-plan ground floor, a versatile mezzanine level, and impressive high ceilings for vertical storage or machinery. Two modern bathrooms, ample parking, and 24/7 park security ensure day-to-day operations run smoothly.

Located just minutes from key highways and transport routes, this unit offers excellent accessibility for deliveries, clients, and staff. Longlake is a sought-after industrial node with low crime, great infrastructure, and nearby amenities like cafes and retail

### Features

**Zoning** Industrial

#### Interior

Power 3 Phase Yes  
Power Amps 63

#### Exterior

Security Yes  
Open Parking Bays 3

#### Sizes

Floor Size 290m²  
Land Size 10,000m²  
Building Height 10m

#### Extras

24 Hour Access

