



Tyrone Varga
Principal Property
Practitioner
Registered with PPRA
(FFC 114 321 7)
072 869 3246

tyrone@newpointproperty.co.za

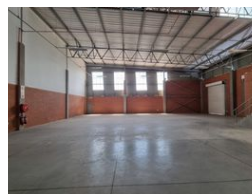
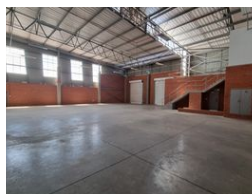
Contact Head Office

010 0354431

Office 40A
Eden Meadows Complex
1 Van Riebeeck Avenue
Greenstone
1609



Web Ref CL12872



R41,870 pm

Gross Monthly Rental R41,870 Excl. VAT
Monthly Rates R6,826.4 Excl. VAT
Monthly Levy R11,236 Excl. VAT

0 4

Premium Warehouse in Longlake's Edge Logistics Hub – Secure, Accessible & Efficient

Position your business for growth in this high-quality warehouse located in the prestigious Edge Logistics complex in Longlake, Sandton. Offering 24/7 security and direct access to the N3 highway, this facility ensures both peace of mind and logistical convenience. Situated near Marlboro Road, it's perfectly connected to Johannesburg's key industrial and commercial routes.

The unit features a high-volume warehouse with excellent height, abundant natural light, and a large roller door for smooth truck access. It also includes a spacious open-plan office or boardroom with an optional mezzanine level for additional office or storage needs. With reliable three-phase power and generous on-site parking, this warehouse delivers the ideal mix of security,

Features

Zoning Industrial

Interior

Power 3 Phase Yes
Power Amps 60

Exterior

Security Yes
Open Parking Bays 4

Sizes

Floor Size 530m²
Land Size 10,000m²

