



Tyrone Varga
Principal Property
Practitioner
Registered with PPRA
(FFC 114 321 7)
072 869 3246

tyrone@newpointproperty.co.za

Contact Head Office

010 0354431

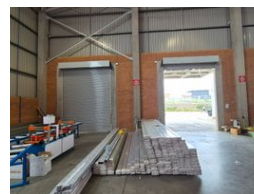
Office 40A
Eden Meadows Complex
1 Van Riebeeck Avenue
Greenstone
1609

1,309m² Warehouse To Let in Longlake

FEATURED



Web Ref TV1309TLL



R125,664 pm

Gross Monthly Rental R125,664 Excl. VAT
Monthly Rates R13,090 Excl. VAT

Monthly Levy R26,180 Excl. VAT



0



18

Warehouse To Let with large yard and security

A prime industrial property in the sought-after Longlake area, conveniently located just off the Marlboro offramp for excellent access and security. It features a spacious paved yard, ideal for super-link truck maneuvering. Two large roller shutter doors provide direct truck entry into the warehouse, streamlining loading and offloading operations. The warehouse boasts great height, abundant natural lighting, and 80 amps of 3-phase power, making it suitable for diverse industrial activities.

The property offers a well-balanced warehouse-to-office ratio, comprising 1126m² of warehouse space and 183.50m² of neat, functional offices. Ample ablution facilities cater to both warehouse and office staff, ensuring convenience. Sufficient parking is

Features

Zoning Industrial

Interior

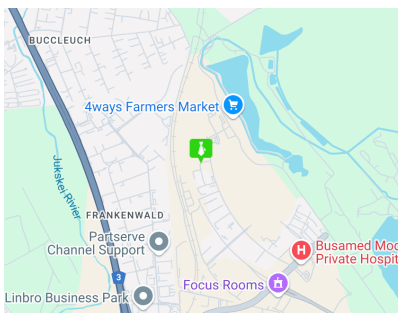
Floor Loading Cap. 5 Tn/m²
Power 3 Phase Yes
Power Amps 80

Exterior

Security Yes
Open Parking Bays 18

Sizes

Floor Size 1,309m²
Land Size 5,000m²



<https://www.newpointproperty.co.za>