



Tyrone Varga

Principal Property Practitioner
Registered with PPRA
(FFC 114 321 7)

072 869 3246

tyrone@newpointproperty.co.za

Contact Head Office

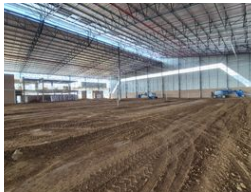
010 0354431

Office 40A
Eden Meadows Complex
1 Van Riebeeck Avenue
Greenstone
1609

2,969m² Warehouse To Let in Linbro Park



Web Ref CL14073



R258,303 pm

Gross Monthly Rental R258,303 Excl. VAT Monthly Levy R50,473 Excl. VAT

 4  8

Brand-New AAA Industrial Warehouse – Linbro Park

Available from 1 August 2025, this premium warehouse in the sought-after Linbro Park offers the perfect blend of strength, scale, and efficiency. Boasting a 9m clear height at the lowest point, a full sprinkler system, and FM2 large reinforced panel floors designed to handle 80kN/m², it's built for heavy-duty industrial operations. Natural light, robust three-phase power, and three versatile roller shutter doors—including on-grade, dock leveller, and loading bay—ensure smooth, efficient workflow. The expansive paved yard accommodates superlinks with ease, making logistics seamless.

The modern 275m² office component will be Triple-A grade and custom-built to suit your exact operational needs, complemented

Features

Zoning Industrial

Interior		Exterior		Sizes	
Power 3 Phase	Yes	Security	Yes	Floor Size	2,969m²
Power Amps	250	Covered Parking Bays	4	Land Size	20,000m²
		Open Parking Bays	8		

