



Miguel Naidoo  
0745822026  
miguel@newpointproperty.co.za

Contact Head Office

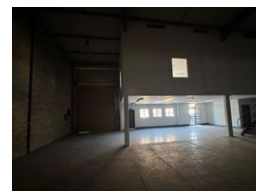
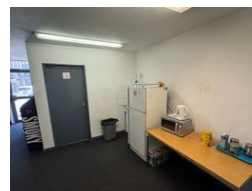
010 0354431

Office 40A  
Eden Meadows Complex  
1 Van Riebeeck Avenue  
Greenstone  
1609

536m<sup>2</sup> Warehouse To Let in Linbro Park



Web Ref TL536LBMN



R42,344 pm

Gross Monthly Rental R42,344 Excl. VAT  
Monthly Rates R1 Excl. VAT

Monthly Levy R1 Excl. VAT

0 3

## 536m<sup>2</sup> industrial Warehouse Unit To Let in Linbro Business Park

Situated in the prestigious Linbro Business Park, this expansive 536m<sup>2</sup> industrial warehouse unit presents an outstanding opportunity for medium to large-scale businesses seeking a secure, accessible, and efficient space to operate from in one of Johannesburg's most strategically positioned industrial zones. Designed with versatility in mind, this warehouse offers a robust foundation for a wide range of industrial applications—from warehousing and storage to light manufacturing and distribution. The space itself is largely open-plan, providing tenants with the freedom to configure it according to their operational needs. The building boasts excellent height to eaves, allowing for substantial vertical storage and the potential installation of high-volume

## Features

**Zoning** Industrial

### Interior

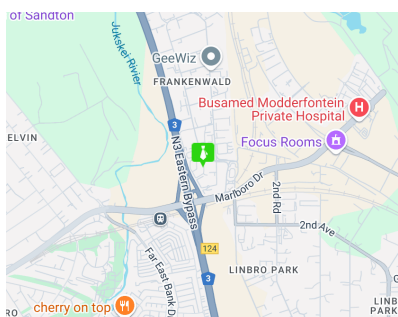
Floor Loading Cap.	1 Tn/m <sup>2</sup>
Air Conditioning	Yes
Power 3 Phase	Yes

### Exterior

Security	Yes
Open Parking Bays	3

### Sizes

Floor Size	536m <sup>2</sup>
Land Size	10,000m <sup>2</sup>
Building Height	10m



<https://www.newpointproperty.co.za>