



Miguel Naidoo
0745822026
miguel@newpointproperty.co.za



Tyrone Varga
Principal Property
Practitioner
Registered with PPRA

(FFC 114 321 7)

072 869 3246

tyrone@newpointproperty.co.za

Contact Head Office

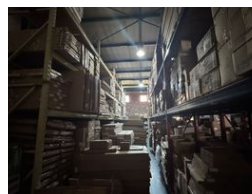
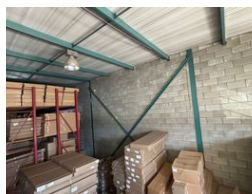
010 0354431

Office 40A
Eden Meadows Complex
1 Van Riebeeck Avenue
Greenstone
1609

329m² Warehouse To Let in Linbro Park



Web Ref TL329LLMN



R25,991 pm

Gross Monthly Rental R25,991 Excl. VAT
Monthly Rates R1 Excl. VAT

Monthly Levy R1 Excl. VAT



329m² industrial Warehouse Unit To Let in Linbro Business Park

Positioned in the sought-after Linbro Business Park, this 329m² industrial warehouse unit offers a premium opportunity for businesses seeking a secure, accessible, and well-maintained industrial space within one of Johannesburg's most strategically located business nodes. The unit is designed to accommodate a range of industrial operations, making it ideal for warehousing, distribution, light manufacturing, or logistics-based enterprises. The property features a modern, clean facade with a professional corporate appeal, and its layout is both functional and efficient. Internally, the warehouse boasts excellent height to eaves, offering ample vertical storage capacity, which allows for optimized racking or shelving solutions. A large roller shutter door provides

Features

Zoning Industrial

Interior

Floor Loading Cap. 1 Tn/m²
Power 3 Phase Yes

Exterior

Open Parking Bays 3

Sizes

Floor Size 329m²
Land Size 10,000m²
Building Height 10m

Extras

24 Hour Access

