



Miguel Naidoo
0745822026
miguel@newpointproperty.co.za



Tyrone Varga
Principal Property Practitioner
Registered with PPRA

(FFC 114 321 7)

072 869 3246

tyrone@newpointproperty.co.za

Contact Head Office

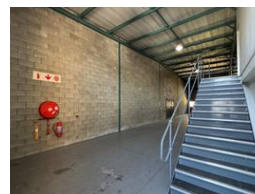
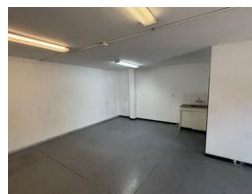
010 0354431

Office 40A
Eden Meadows Complex
1 Van Riebeeck Avenue
Greenstone
1609

332m² Warehouse To Let in Linbro Park



Web Ref TL322LBMN



R26,149 pm

Gross Monthly Rental R26,149 Excl. VAT
Monthly Rates R1 Excl. VAT

Monthly Levy R1 Excl. VAT

2 4

332m² industrial Warehouse Unit To Let in Linbro

Situated in the highly sought-after industrial precinct of Linbro Park, this 332m² warehouse unit presents an exceptional opportunity for businesses seeking a well-balanced mix of warehouse space and office functionality in a secure, accessible, and professional setting. The unit features a generously sized, open-plan warehouse floor designed to accommodate a wide range of light industrial, distribution, or storage needs. With high internal clearance, a large roller shutter door, and a robust concrete floor, the space is ideal for racking, packaging, or even small-scale production. Natural light flows through the translucent roof sheeting, contributing to a bright and energy-efficient working environment, while high bay lighting provides full coverage for late shifts or

Features

Zoning Industrial

Interior

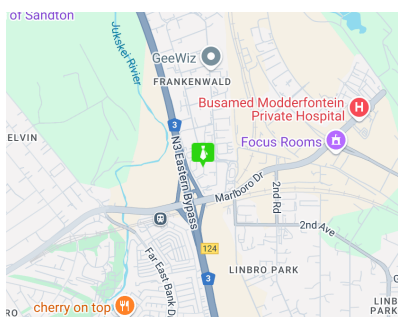
Floor Loading Cap. 1 Tn/m²
Air Conditioning Yes

Exterior

Covered Parking Bays 2
Open Parking Bays 4

Sizes

Floor Size 332m²
Land Size 10,000m²
Building Height 10m



<https://www.newpointproperty.co.za>