



Tyrone Varga
Principal Property
Practitioner
Registered with PPRA
(FFC 114 321 7)
072 869 3246

tyrone@newpointproperty.co.za

Contact Head Office

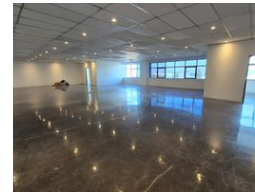
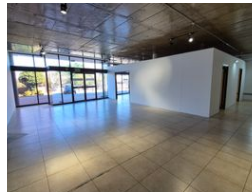
010 0354431

Office 40A
Eden Meadows Complex
1 Van Riebeeck Avenue
Greenstone
1609

911m² Warehouse To Let in Linbro Park



Web Ref TV911TLL



R72,880 pm

Gross Monthly Rental R72,880 Excl. VAT



0



10

Warehouse with Showroom and office with main road exposure in Linbro park

This neat warehouse with showroom/office space To Let is ideally located in the sought-after Linbro Park node, offering fantastic main road exposure and excellent access just off the N3 highway. The property features a well-presented showroom and office component on both the ground and first floors, making it ideal for businesses that require a professional front-of-house presence combined with functional industrial space. The layout is efficient, with a good balance between office and warehouse, allowing for seamless operational flow.

The warehouse itself offers great internal height, allowing for optimal vertical storage, and is fitted with ample natural lighting, enhancing energy efficiency. It is powered by 3-phase prepaid electricity, making it suitable for a range of light industrial or

Features

Zoning Industrial

Interior

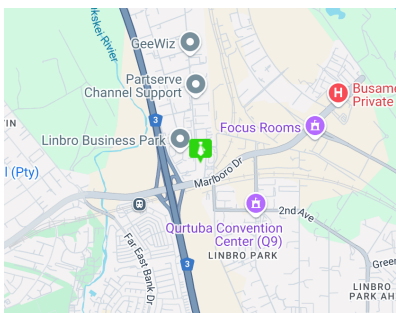
Power 3 Phase	Yes
Power Amps	100

Exterior

Security	Yes
Open Parking Bays	10

Sizes

Floor Size	911m ²
Land Size	10,000m ²



<https://www.newpointproperty.co.za>