



Tyrone Varga
Principal Property
Practitioner
Registered with PPRA
(FFC 114 321 7)
072 869 3246

tyrone@newpointproperty.co.za

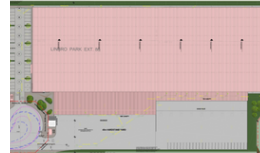
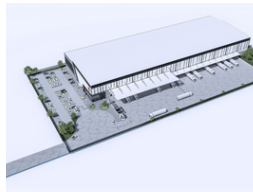
Contact Head Office

010 0354431

Office 40A
Eden Meadows Complex
1 Van Riebeeck Avenue
Greenstone
1609



Web Ref TV12674TL



R1,204,030 pm

Gross Monthly Rental R1,204,030 Excl. VAT **Monthly Levy** R13 Excl. VAT

10 30

Be the first to occupy this state of the art warehouse

This 12,674m² warehouse is positioned on a 28,225m² fully paved stand in a secure, access-controlled park. Offering excellent height and sprinkler systems throughout, the warehouse includes multiple on-grade doors, dock levelers, and loading bays – ideal for superlink and container access. Located just off the N3 highway with quick access to major routes.

Triple-A grade offices are built to spec, with modern infrastructure and fibre optic connectivity. Ample Eskom power available within the park. Labour pool nearby ensures efficient staffing. The park features 24-hour security and is professionally maintained by the Meadowview Property Owners Association, set within landscaped surroundings – a rare blend of logistics functionality and

Features

Zoning Industrial

Interior

Power 3 Phase	Yes
Power Amps	500

Exterior

Security	Yes
Covered Parking Bays	10
Open Parking Bays	30

Sizes

Floor Size	12,674m ²
Land Size	28,225m ²

