



Tyrone Varga
Principal Property
Practitioner
Registered with PPRA
(FFC 114 321 7)
072 869 3246

tyrone@newpointproperty.co.za

Contact Head Office

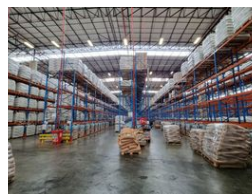
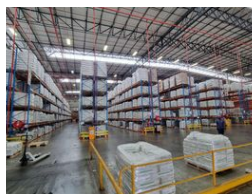
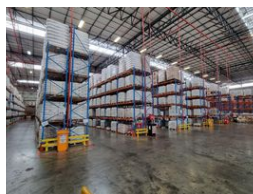
010 0354431

Office 40A
Eden Meadows Complex
1 Van Riebeeck Avenue
Greenstone
1609

8,470m² Warehouse To Let in Linbro Park



Web Ref CL11408



R703,010 pm

Gross Monthly Rental R703,010 Excl. VAT



5



50

8 470sqm Magnificent warehouse with large Yard in Linbro Park, Sandton

Ideal for logistics and storage companies, this expansive warehouse offers 11-meter eaves height and an abundance of natural light, creating a spacious and well-illuminated working environment. With five large roller doors, including four loading docks and an on-ramp roller door, the facility ensures smooth and efficient operations. The warehouse is equipped with comprehensive sprinkler systems throughout, with the option to add in-rack sprinklers for enhanced safety and fire protection.

Located within a secure business park just off the Marlboro off-ramp, this property features a paved yard designed for effortless maneuvering and offloading of super link trucks. The warehouse also includes a well-maintained office space complete with a

Features

Zoning Industrial

Interior

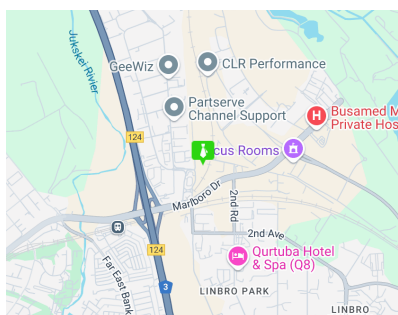
Air Conditioning	Yes
Power 3 Phase	Yes

Exterior

Security	Yes
Covered Parking Bays	5
Open Parking Bays	50

Sizes

Floor Size	8,470m ²
Land Size	20,000m ²



<https://www.newpointproperty.co.za>