



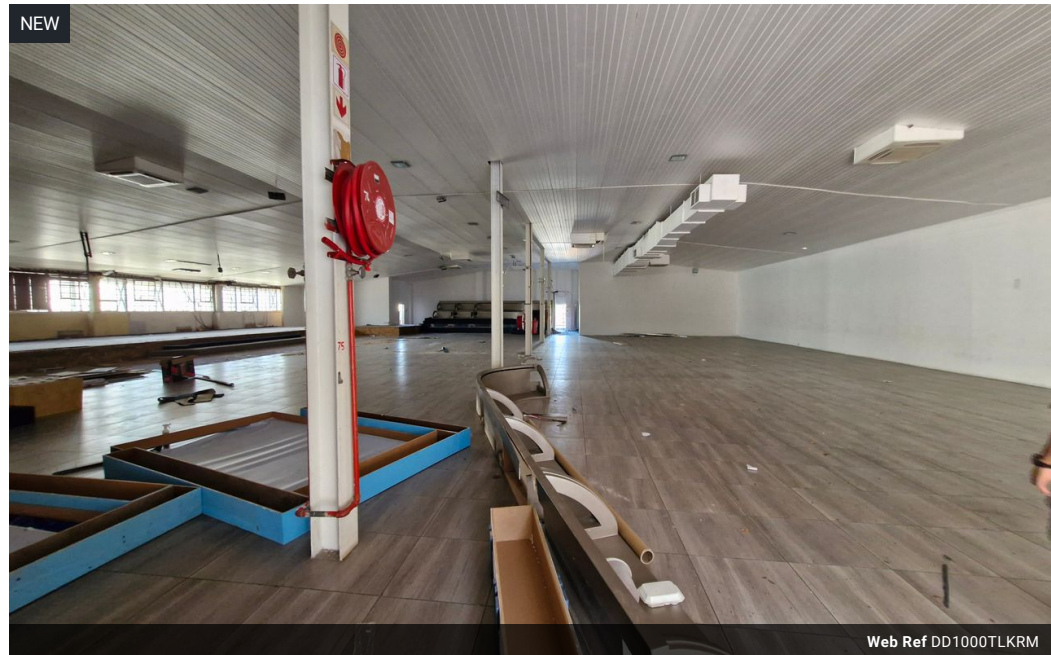
Dane Davids
0844782022
dane@newpointproperty.co.za

Contact Head Office

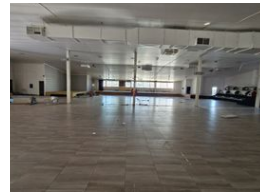
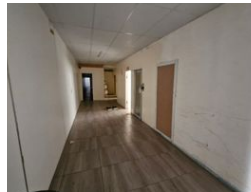
010 0354431

Office 40A
Eden Meadows Complex
1 Van Riebeeck Avenue
Greenstone
1609

1,000m² Warehouse To Let in Kramerville



Web Ref DD1000TLKRM



R85,000 pm

Gross Monthly Rental R85,000 Excl. VAT
Monthly Rates R1 Excl. VAT

Monthly Levy R1 Excl. VAT

0 6

Rare piece of warehouse stock available in the heart of Kramerville , with showroom potential

Now available to let in the heart of Kramerville, this rare warehouse offering presents a unique opportunity for businesses seeking premium space with showroom potential. Boasting a generous 1,000m² open-plan floor layout, the property is ideal for a range of uses including distribution, light manufacturing, or a stylish showroom setup.

The warehouse features an on-grade roller shutter door for convenient access, along with dedicated yard space for loading, parking, or outdoor storage. Located in one of Sandton's most vibrant commercial nodes, this space offers excellent visibility and

Features

Zoning Industrial

Interior

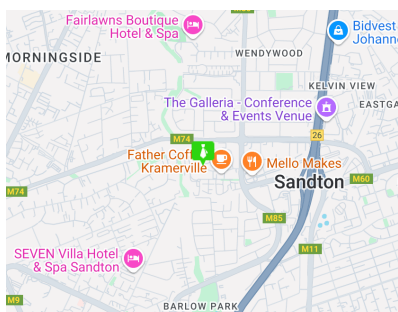
Floor Loading Cap.	10 Tn/m ²
Air Conditioning	Yes
Power 3 Phase	Yes
Power Amps	200

Exterior

Open Parking Bays	6
-------------------	---

Sizes

Floor Size	1,000m ²
Land Size	2,500m ²
Building Height	7m



<https://www.newpointproperty.co.za>