



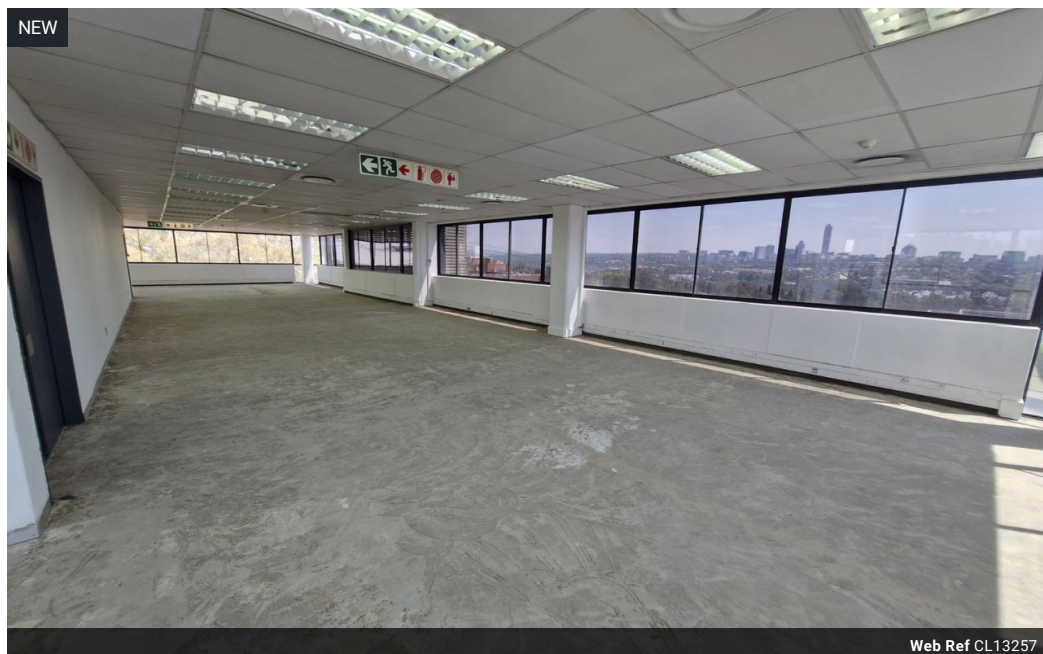
Dane Davids
0844782022
dane@newpointproperty.co.za

Contact Head Office

010 0354431

Office 40A
Eden Meadows Complex
1 Van Riebeeck Avenue
Greenstone
1609

444m² Showroom To Let in Kramerville



R53,280 pm

Gross Monthly Rental R53,280 Excl. VAT

0 0

Showcase Your Brand in Kramerville's Premier Design Hub

Position your business in the heart of Kramerville with this stunning, light-filled showroom—perfect for interior, décor, or lifestyle brands looking to make a bold statement. Featuring modern architecture, expansive glass frontage, and high-end finishes, the space is designed to elevate your brand presence while providing an inviting, upmarket environment for clients and product displays.

Surrounded by Sandton's top design showrooms, the property benefits from strong foot traffic and excellent visibility in one of Johannesburg's most sought-after creative districts. With ample parking, easy highway access, and immediate availability, this is a

Features

Building Name		Kramerville Corner			
Zoning		Industrial			
Interior		Exterior		Sizes	
Floor Loading Cap.	5 Tn/m²	Security	Yes	Floor Size	444m²
Air Conditioning	Yes			Land Size	30,000m²
Power 3 Phase	Yes			Building Height	15m
Power Amps	80				

