



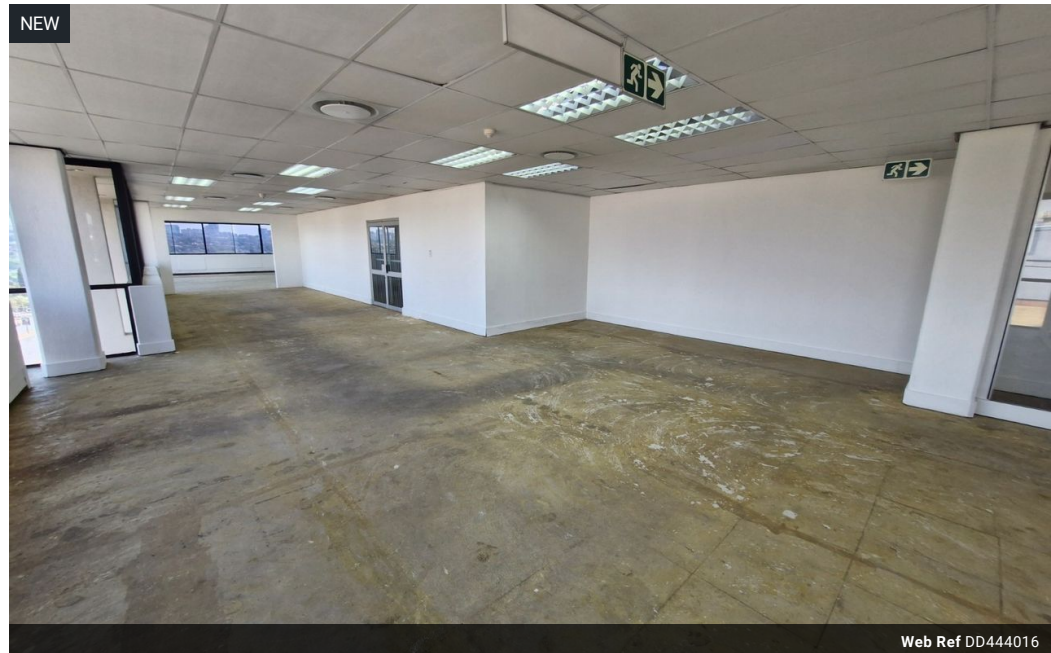
Dane Davids
0844782022
dane@newpointproperty.co.za

Contact Head Office

010 0354431

Office 40A
Eden Meadows Complex
1 Van Riebeeck Avenue
Greenstone
1609

444m² Showroom To Let in Kramerville



Web Ref DD444016



R53,280 pm

Gross Monthly Rental R53,280 Excl. VAT

0 0

Prestige Showroom Space in Kramerville's Premier Design District

Elevate your brand in the iconic Kramerville design precinct with this upmarket showroom, ideal for interior, décor, or lifestyle brands. Boasting striking modern architecture and expansive glass frontage, the space is filled with natural light, creating a warm, refined atmosphere to display your products. High-end finishes, standout visibility, and generous parking make this property a standout opportunity for businesses seeking to impress.

Set among Sandton's leading décor and design showrooms, the location delivers high foot traffic and unbeatable exposure in a stylish, high-demand area. With easy access to key highways and ready for immediate occupation, this is your chance to secure a

Features

Building Name		Kramerville Corner	
Zoning		Industrial	
Interior		Exterior	
Floor Loading Cap.	5 Tn/m ²	Security	Yes
Air Conditioning	Yes		
Power 3 Phase	Yes		
Power Amps	80		
		Sizes	
		Floor Size	444m ²
		Land Size	30,000m ²
		Building Height	15m

