



Tyrone Varga
Principal Property Practitioner
Registered with PPRA
(FFC 114 321 7)
072 869 3246

tyrone@newpointproperty.co.za



Miguel Naidoo
0745822026

miguel@newpointproperty.co.za

Contact Head Office

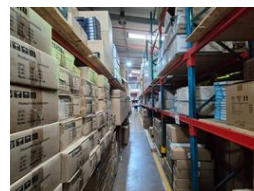
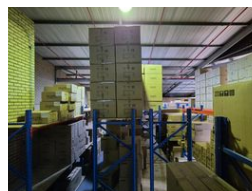
010 0354431

Office 40A
Eden Meadows Complex
1 Van Riebeeck Avenue
Greenstone
1609

1,666m² Factory To Let in Eastgate



Web Ref CL13918



R141,610 pm

Gross Monthly Rental R141,610 Excl. VAT



8



Versatile Industrial Facility with Offices in Prime Sandton Location

Boost your operations with this 1,666m² industrial property in Eastgate, Sandton—designed for performance and efficiency. The warehouse includes three roller shutter doors, 150 amps of three-phase power, great internal height, and a full sprinkler system—ideal for storage, manufacturing, or logistics.

Paired with a modern 561m² air-conditioned office component, this facility supports both production and administrative needs. Perfectly positioned between the N3 and M1 highways, it offers unbeatable accessibility for goods movement and staff commute.

Features

Zoning Industrial

Interior

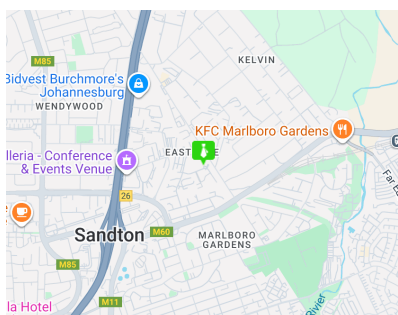
Power 3 Phase	Yes
Power Amps	150

Exterior

Covered Parking Bays	8
Open Parking Bays	12

Sizes

Floor Size	1,666m ²
Land Size	2,000m ²



<https://www.newpointproperty.co.za>