



Tyrone Varga
Principal Property Practitioner
Registered with PPRA
(FFC 114 321 7)
072 869 3246

tyrone@newpointproperty.co.za



Miguel Naidoo
0745822026

miguel@newpointproperty.co.za

Contact Head Office

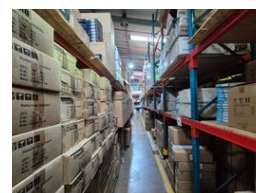
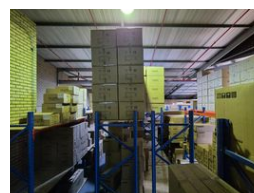
010 0354431

Office 40A
Eden Meadows Complex
1 Van Riebeeck Avenue
Greenstone
1609

1,666m² Factory To Let in Eastgate



Web Ref CL13536



R141,610 pm

Gross Monthly Rental R141,610 Excl. VAT

 8  12

Versatile 1,666m² Warehouse & Office Facility in Prime Sandton Location

Position your business for success with this well-equipped 1,666m² industrial property in the sought-after Eastgate area of Sandton. The warehouse features three roller shutter doors, 150 amps of three-phase power, excellent height, and a full sprinkler system—making it ideal for warehousing, manufacturing, or distribution operations.

Complementing the warehouse is a 561m² air-conditioned office component, offering modern, functional workspace for admin and management teams. Conveniently located between the N3 and M1 highways, the property provides exceptional access to key

Features

Zoning Industrial

Interior

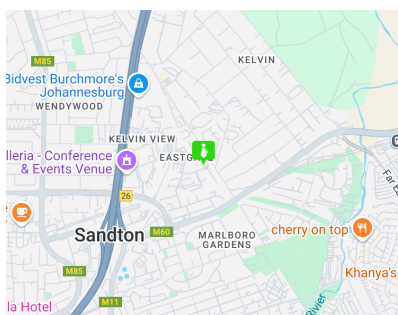
Power 3 Phase	Yes
Power Amps	150

Exterior

Covered Parking Bays	8
Open Parking Bays	12

Sizes

Floor Size	1,666m ²
Land Size	2,000m ²



<https://www.newpointproperty.co.za>