



**Ryan Van Rensburg**  
0846482022  
ryan@newpointproperty.co.za

Contact Head Office

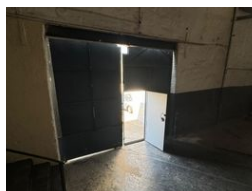
010 0354431

Office 40A  
Eden Meadows Complex  
1 Van Riebeeck Avenue  
Greenstone  
1609

300m² Workshop To Let in Technikon



Web Ref RCL12921300



R13,500 pm

Gross Monthly Rental R13,500 Excl. VAT



## 300m² Secure Warehouse/Workshop – Ideal for Light Industrial Use

This versatile 300m² warehouse or workshop is located in a secure, access-controlled industrial park—offering a safe and efficient environment for daily operations. Equipped with three-phase power, it's perfectly suited for light manufacturing, storage, or workshop use, making it a great fit for a range of business needs.

The unit features neat ablution facilities and dedicated office space, creating a practical balance between admin and operational functions. With excellent access and a well-managed park setting, it's an ideal choice for small to medium-sized businesses ready

## Features

**Zoning** Industrial

### Interior

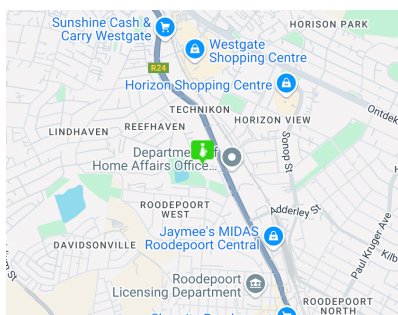
Floor Loading Cap. 1 Tn/m²  
Power 3 Phase Yes

### Exterior

Security Yes

### Sizes

Floor Size 300m²  
Land Size 300m²  
Building Height 5m



<https://www.newpointproperty.co.za>