



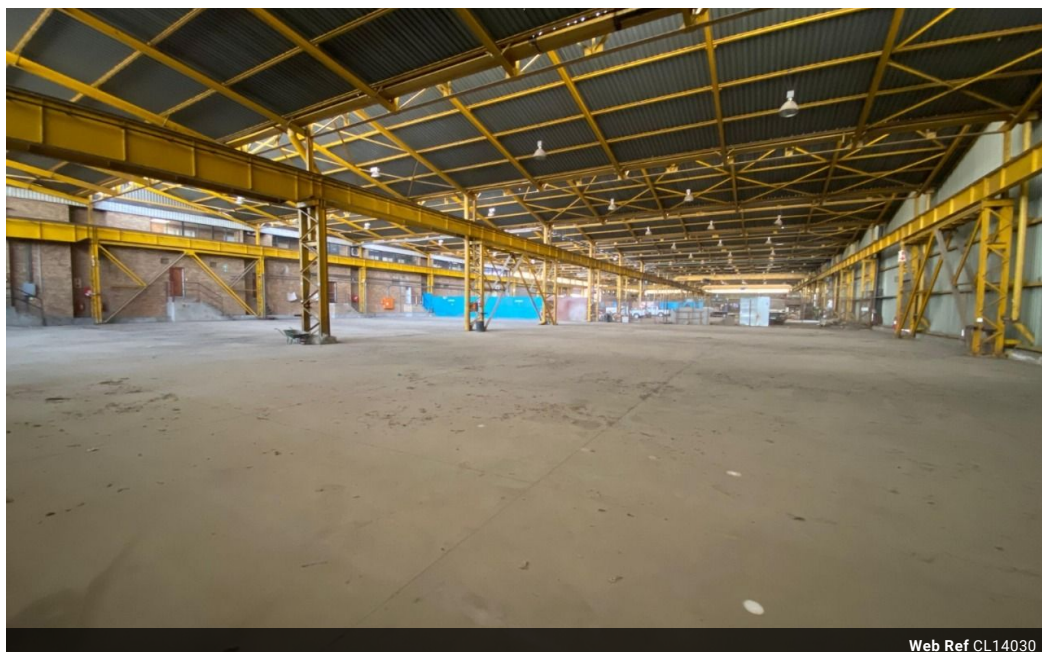
Ryan Van Rensburg  
0846482022  
ryan@newpointproperty.co.za

Contact Head Office

010 0354431

Office 40A  
Eden Meadows Complex  
1 Van Riebeeck Avenue  
Greenstone  
1609

2,000m<sup>2</sup> Warehouse To Let in Stormill



Web Ref CL14030



R50,000 pm

Gross Monthly Rental R50,000 Excl. VAT



0



0

## 2,000m<sup>2</sup> High-Clearance Warehouse – Space, Flow & Exceptional Value

Maximize efficiency with this 2,000m<sup>2</sup> warehouse, designed for businesses that need generous space, soaring ceilings, and a seamless layout. Ideal for bulk storage, logistics, or distribution, its open-plan design supports smooth inventory movement and streamlined operations.

The facility includes neat office areas, staff ablutions, and a secure high roller shutter door for effortless loading and unloading.

## Features

**Zoning** Industrial

### Interior

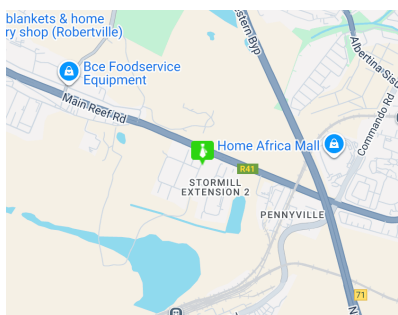
Power 3 Phase Yes

### Exterior

Security Yes

### Sizes

Floor Size 2,000m<sup>2</sup>  
Building Height 8m



<https://www.newpointproperty.co.za>