



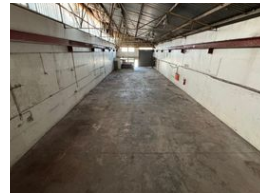
Ryan Van Rensburg
0846482022
ryan@newpointproperty.co.za

Contact Head Office

010 0354431

Office 40A
Eden Meadows Complex
1 Van Riebeeck Avenue
Greenstone
1609

583m² Warehouse To Let in Stormill



R23,320 pm

Gross Monthly Rental R23,320 Excl. VAT



Power-Packed Industrial Unit with Crane & Office Space

This versatile 583m² industrial unit is designed for performance and efficiency, featuring 250 Amps of 3-phase power, a 3-ton overhead gantry crane, generous internal height, and a high roller shutter door – perfect for handling heavy-duty operations and smooth goods flow.

Complementing the warehouse is a neat, multi-level office component ideal for admin and management teams, along with ablution facilities on both floors for added convenience. Positioned to support growth and streamline operations, this unit offers the ideal

Features

Zoning Industrial

Interior

Floor Loading Cap.	1 Tn/m ²
Power 3 Phase	Yes
Power Amps	250

Sizes

Floor Size	583m ²
Land Size	583m ²
Building Height	6m

