



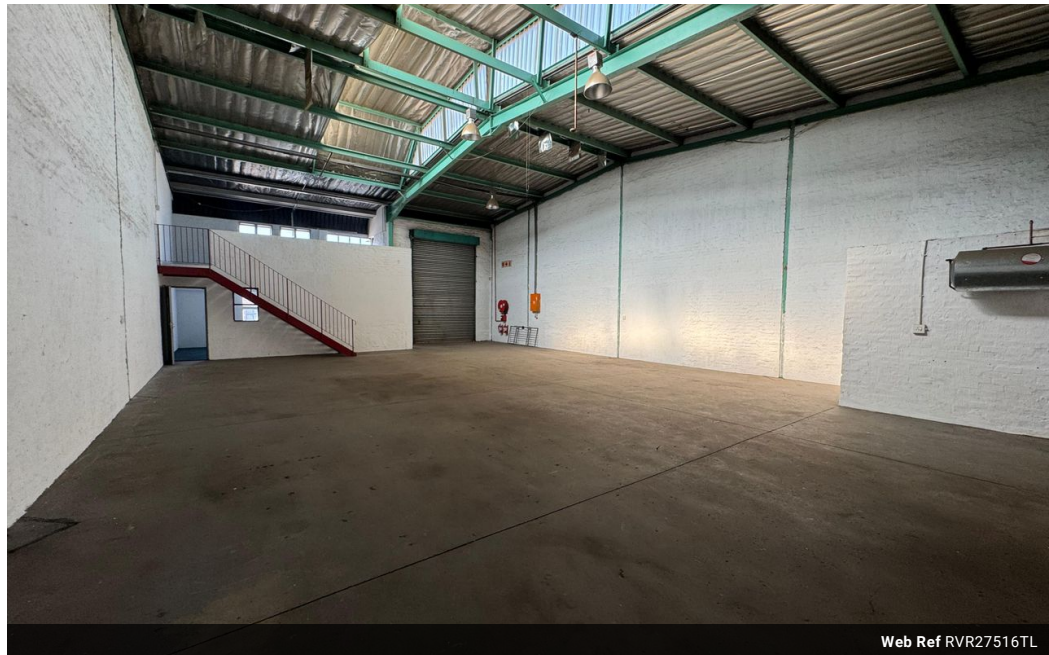
Ryan Van Rensburg  
0846482022  
ryan@newpointproperty.co.za

Contact Head Office

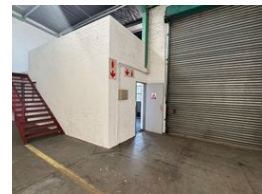
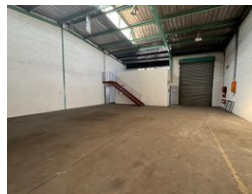
010 0354431

Office 40A  
Eden Meadows Complex  
1 Van Riebeeck Avenue  
Greenstone  
1609

## 275m<sup>2</sup> Warehouse To Let in Stormill



Web Ref RVR27516TL



R11,000 pm

Gross Monthly Rental R11,000 Excl. VAT

0 0

## 275sqm Warehouse TO LET in Stormill

275sqm warehouse is located in a secure, access-controlled industrial park with 24/7 entry, offering both convenience and peace of mind for your operations. Designed with functionality in mind, the unit features a high roller shutter door for seamless loading and unloading, along with three-phase power to support heavy-duty equipment and machinery needs.

Inside, the warehouse includes a well-positioned mezzanine floor, ideal for storage or additional workspace, as well as clean ablution facilities and a dedicated office area to accommodate administrative functions. Whether you're looking to expand or

## Features

**Zoning** Industrial

### Interior

Floor Loading Cap. 1 Tn/m<sup>2</sup>  
Power 3 Phase Yes  
Power Amps 80

### Exterior

Security Yes

### Sizes

Floor Size 275m<sup>2</sup>  
Land Size 275m<sup>2</sup>  
Building Height 5m

