



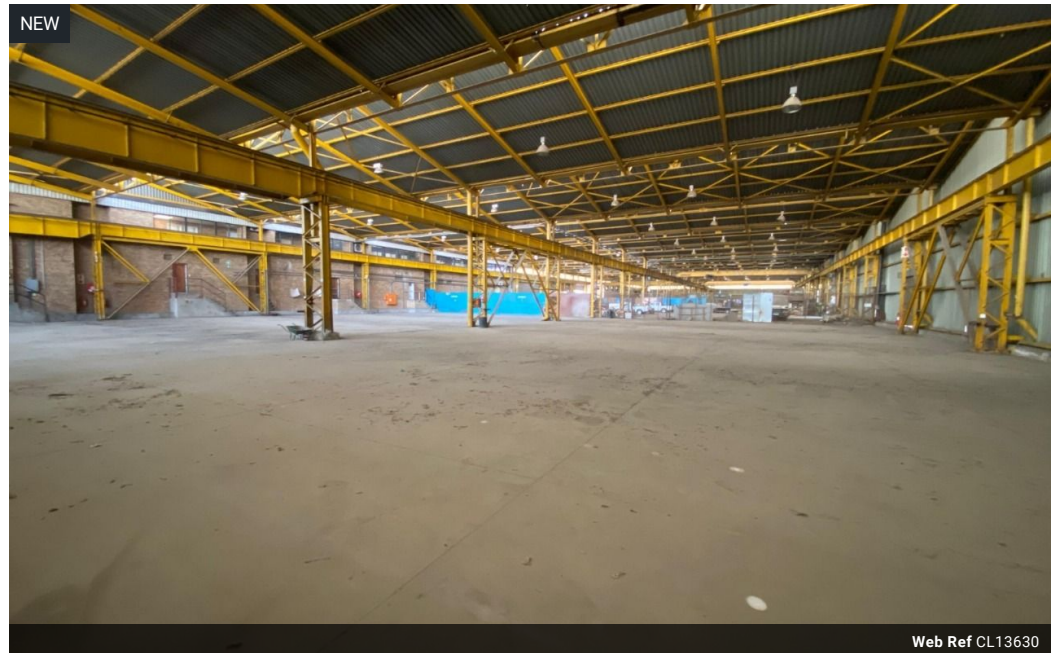
Ryan Van Rensburg
 0846482022
ryan@newpointproperty.co.za

Contact Head Office

010 0354431

Office 40A
 Eden Meadows Complex
 1 Van Riebeeck Avenue
 Greenstone
 1609

2,000m² Warehouse To Let in Stormill



R50,000 pm

Gross Monthly Rental R50,000 Excl. VAT

0 0

High-Volume 2,000m² Warehouse – Ideal for Storage, Logistics & Distribution

Streamline your operations with this expansive 2,000m² warehouse, purpose-built for businesses that require space, height, and flow. Featuring soaring ceilings and an open-plan layout, it's perfectly suited for bulk storage, logistics, or distribution, allowing for efficient inventory movement and optimized workflow.

The property is equipped with tidy office areas, staff ablutions, and a secure access point with a high roller shutter door to ensure smooth loading and unloading. Competitively priced per square meter, this warehouse offers unbeatable value for scaling

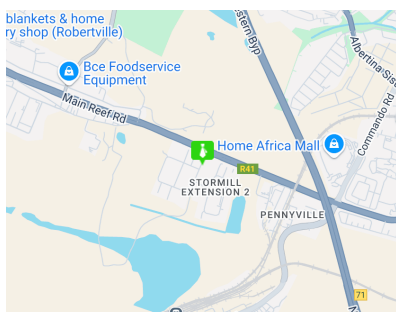
Features

Zoning Industrial

Interior
 Power 3 Phase Yes

Exterior
 Security Yes

Sizes
 Floor Size 2,000m²
 Building Height 8m



<https://www.newpointproperty.co.za>