



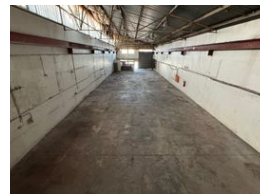
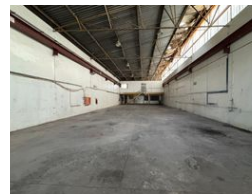
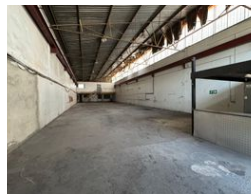
Ryan Van Rensburg
0846482022
ryan@newpointproperty.co.za

Contact Head Office

010 0354431

Office 40A
Eden Meadows Complex
1 Van Riebeeck Avenue
Greenstone
1609

583m² Warehouse To Let in Stormill



R23,320 pm

Gross Monthly Rental R23,320 Excl. VAT

0 0

583sqm Warehouse TO LET in Stormill

This functional and well-equipped industrial unit offers 583sqm of versatile space, ideal for businesses requiring power, height, and efficiency.

Key Features:

250 Amps of 3-Phase Power – suitable for heavy machinery and high-demand operations

3-Ton Overhead Gantry Crane – perfect for lifting and handling heavy materials with ease

Generous Internal Clearance – providing ample vertical space for storage or equipment

High Roller Shutter Door – allowing for smooth access for trucks and goods movement

Multi-Level Offices – neat and functional office space ideal for admin and management

Features

Zoning Industrial

Interior

Floor Loading Cap.	1 Tn/m ²
Power 3 Phase	Yes
Power Amps	250

Sizes

Floor Size	583m ²
Land Size	583m ²
Building Height	6m

