



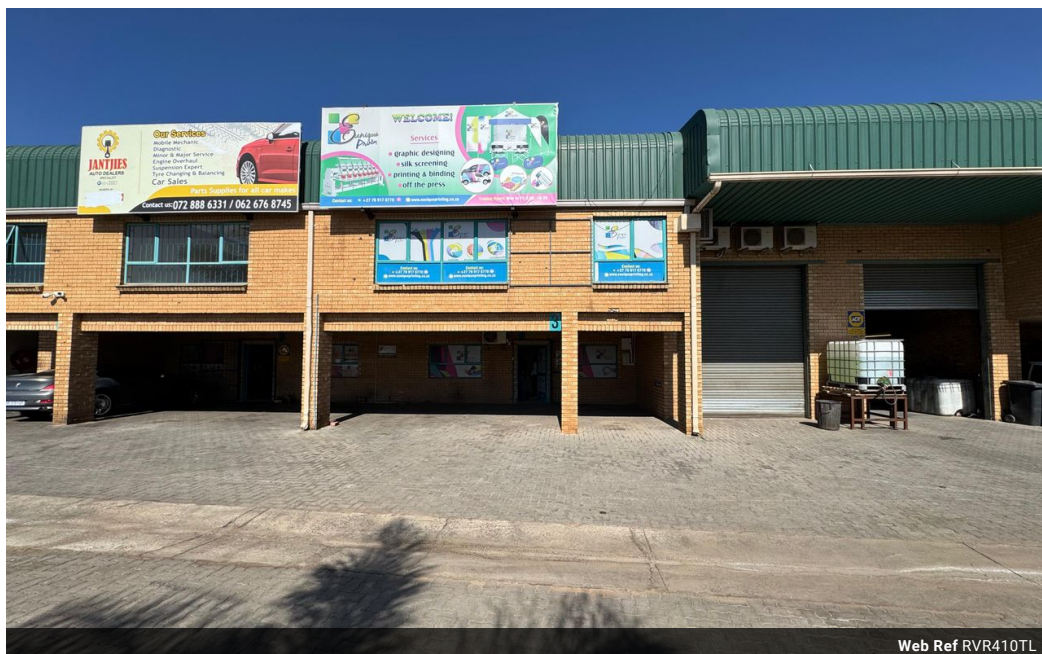
Ryan Van Rensburg  
0846482022  
ryan@newpointproperty.co.za

Contact Head Office

010 0354431

Office 40A  
Eden Meadows Complex  
1 Van Riebeeck Avenue  
Greenstone  
1609

410m<sup>2</sup> Warehouse To Let in Stormill



Web Ref RVR410TL



R24,350 pm

Gross Monthly Rental R24,350 Excl. VAT

0 0

## 410sqm Unit TO LET in Stormill

This extremely neat industrial unit offers a superb opportunity for businesses seeking a clean, functional space in a secure and well-maintained park. The unit features well-appointed offices and ablutions, providing a comfortable working environment.

A standout feature is the internal drywalling, which can be retained to create separate storage areas or easily removed to accommodate open-plan operational needs—offering flexible space usage to suit a range of businesses.

Additional highlights include ample on-site parking for staff and visitors, convenient access for deliveries, and a professional

## Features

**Zoning** Industrial

### Interior

Floor Loading Cap. 1 Tn/m<sup>2</sup>  
Power 3 Phase Yes  
Power Amps 60

### Sizes

Floor Size 410m<sup>2</sup>  
Land Size 410m<sup>2</sup>  
Building Height 4m

