



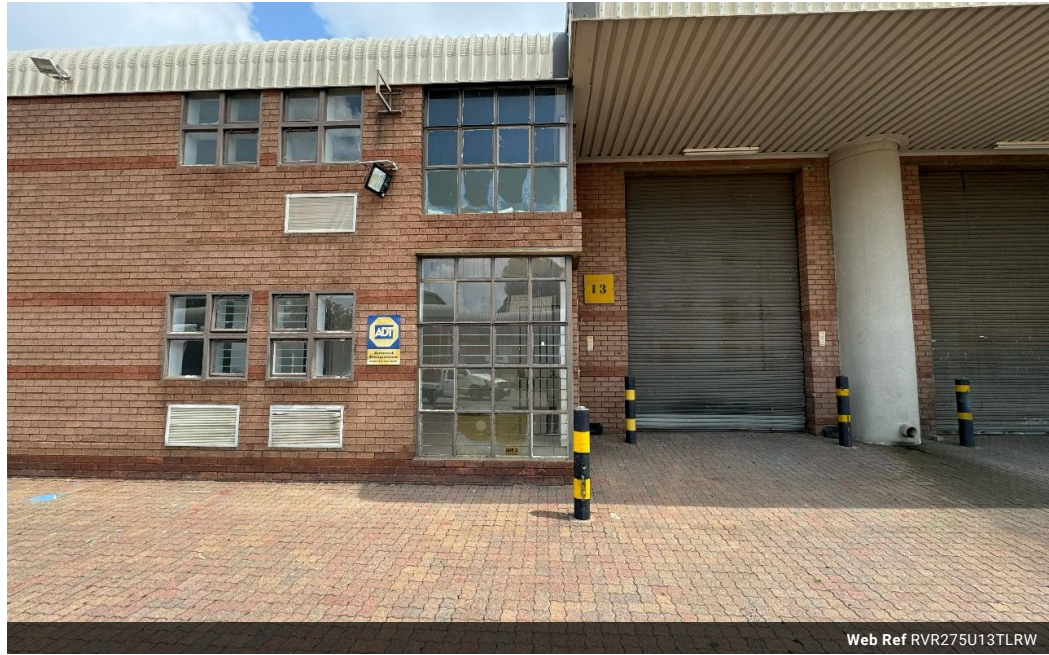
Ryan Van Rensburg
0846482022
ryan@newpointproperty.co.za

Contact Head Office

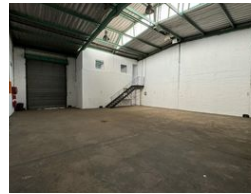
010 0354431

Office 40A
Eden Meadows Complex
1 Van Riebeeck Avenue
Greenstone
1609

275m² Warehouse To Let in Stormill



Web Ref RVR275U13TLRW



R12,375 pm

Gross Monthly Rental R12,375 Excl. VAT



Secure 275m² Industrial Unit with Office & Power in Prime Location

This well-maintained 275m² industrial unit is set in a highly secure, access-controlled park with 24/7 security—offering peace of mind for your daily operations. The unit includes a high roller shutter door, ensuring effortless access for deliveries, loading, and dispatch.

Inside, the space offers a practical office area for day-to-day management, along with convenient staff and visitor ablutions. Fitted with three-phase power, this unit supports various industrial or commercial uses. Whether you're expanding or establishing your

Features

Zoning Industrial

Interior

Floor Loading Cap. 1 Tn/m²
Power 3 Phase Yes

Exterior

Security Yes

Sizes

Floor Size 275m²
Land Size 275m²
Building Height 8m

